



CIVIL
CONSTRUCTION
Delivering technical excellence and
cost-effective solutions



Humble beginnings, Fulton Hogan 'work gang', 1960.

Humble beginnings

When Jules Fulton, an assistant surveyor, and Bob Hogan, a mechanic, lost their jobs with an asphalt company at the height of the Great Depression, they seized the opportunity to form their own quarrying and asphalt surfacing company.

From these modest beginnings in 1933, Fulton Hogan has grown to become one of New Zealand's leading civil construction companies, expanding through both organic growth and acquisition.

Years of construction experience, as well as diverse expertise and a well-developed business model means that Fulton Hogan can provide skills and services to customers across a range of infrastructure sectors around New Zealand and overseas.

From our quarries supplying our asphalt plants and civil projects, all the way through to our asphalt plants and precast businesses delivering materials directly to our construction projects, our vertically integrated business delivers end-to-end contracting solutions.

For Fulton Hogan customers, this level of integration optimises communications, reduces risk and allows a high level of control over all aspects of a project, including logistics, cost and quality.

From motorways, rail and bridge construction, through to specialist infrastructure such as water and energy projects, precast and piling services, we seek to provide customers with all the elements of civil construction.

"As the New Zealand Transport Agency's representative on the Christchurch Southern Motorway project I have found Fulton Hogan's Civil team to be very approachable, willing to work cooperatively and fully engaged in creating and maintaining the 'no surprises' environment that the NZTA expects of its suppliers."

Geoff Griffiths

Senior Project Manager

New Zealand Transport Agency

The Fulton Hogan advantage

Comprehensive services

As a specialist in civil construction across industry sectors, Fulton Hogan is able to provide customers with the benefits of a vertically integrated business model, delivering end-to-end contracting solutions. This enables our customers to deal with one supplier throughout an entire project, ensuring that we retain full responsibility for all the materials, design services and construction results.

New Zealand wide

Fulton Hogan has over 3500 employees operating throughout New Zealand. This widespread geographical footprint allows us to deliver outstanding outcomes by bringing our regional knowledge to projects and engaging with local communities. Our people are our greatest strength. We employ the best people who take pride in delivering the best results in all the projects they work on.

Maintaining a customer focus

For nearly 80 years, Fulton Hogan has honed its skills as a supplier of contracting services to our customers in New Zealand. Our focus is on understanding our customers' long term needs, delivering projects on time and on budget, and exceeding expectations

Focused on managing the project

Fulton Hogan has the internal resources to be largely self-performing on a broad range of civil engineering projects. Where appropriate, these are supplemented with competent and trusted subcontractors, specialists and suppliers. As our customers will attest, this approach, combined with our high level of vertical integration, allows us to focus on managing the project in its entirety instead of being diverted into managing the contract.

Leaders in innovation

Fulton Hogan is committed to achieving outstanding results by going beyond convention and constantly seeking new and innovative solutions for our customers' needs.

Our in-house designed and manufactured Stone Column equipment, effectively used on several projects including MainFreight Rail Terminal, East Taupo Arterial and Christchurch Southern Motorway, is just one of many examples of Fulton Hogan's leading innovation.



Removal of the top section of Christchurch's historic Edmonds Clock Tower, in preparation for post earthquake repairs and seismic strengthening.



Construction by temporary staging of the Orewa River Bridge in Silverdale, north of Auckland.



Fulton Hogan is committed to achieving outstanding results by going beyond convention and constantly seeking new and innovative solutions for our customers' needs.

Driven UC Piling at Christchurch Southern Motorway.

Leaders of collaborative relationships and alliances

Fulton Hogan has the experience and resources to enter into successful collaborative arrangements, both as a partner and head contractor. A recent example includes the Centennial Highway median barrier project in Wellington. This was an early contract involvement (ECI) contract in which Fulton Hogan was involved in the design and construction of the structural elements. The head contract value was \$14M and was NZ Transport Agency's first ever ECI contract. Another example is the Kupe Gas Onshore Facility in Taranaki, an alliance contract where Fulton Hogan was subcontracted to undertake the civil works.

Industry leading safety practices

The safety of our people and the communities in which we operate is Fulton Hogan's number one priority. Our 'Zero Harm' policy has led to the company approaching industry best practice in safety.

Financially stable

With assets of over \$1.5 billion and a long history of financial stability, Fulton Hogan has the strength to ensure projects are successfully delivered. This stability allows us to manage multiple projects across infrastructure sectors without compromising stakeholder relationships.

Strong, long term relationships

Fulton Hogan values and fosters open and honest relationships with its customers, employees, suppliers and contractors. Over 90 percent of our construction work is from repeat customers and we have established a reliable pool of suppliers and subcontractors across the country, that understand our culture and how we deliver projects.

Road, Motorway and Rail Structures

Building on experience

The construction of major bridges as well as underpasses, culverts and retaining walls are all part of Fulton Hogan's core construction capability.

Our expertise and experience in constructing bridges and structures has grown steadily in the past five years, as a result of the rapid growth in motorway projects in New Zealand and the increasing investment in rail infrastructure.

Our portfolio ranges from small, simple bridges to technically challenging structures, such as the Ormiston Road Cable Stay Bridge in Manukau, the Kaituna River Bridge as part of the Tauranga Eastern Link project, and the Otanerua Viaduct Bridge as part of the Northern Gateway Alliance project near Orewa.

As with most of our civil projects, Fulton Hogan can carry out a full design and construct service to deliver all the elements of bridge construction, including piling and pre-stressed concrete beams. This enables our customers to deal with one supplier across the entire project, ensuring that we retain full responsibility for all the materials, design services and construction results.

In all our bridge construction projects, we use best process construction techniques to overcome technical challenges, provide value for money and deliver high quality results. We combine very high levels of engineering and construction expertise with an in-depth knowledge of New Zealand's varied topography, to ensure that the best bridging solution is applied to the site conditions at hand.

Our reputation has been built on this approach and we consistently deliver a high level of competitive advantage as a result.

Key projects

- **Candy's Bend to Starvation Point, \$11M** - Completed in 2001, a road widening project, in a very challenging South Island high-ground environment included 18,000m³ of rock excavation and 60m of permanent rockfall protection structures.
- **Ormiston Road Cable Stay Bridge, Manukau** - New Zealand's first cable stayed road bridge is a 70m long steel boxgirder suspended from 46m high concrete pylons and carrying four traffic lanes, two cycleways and footpaths on both sides.
- **Kaituna River Bridge** - Constructed as part of the Tauranga Eastern Link project and is a 186m, four span structure supported by 50m deep driven steel piles, with extensive ground improvement in the form of 55,000m of stone columns to the approach embankments for settlement and seismic strengthening.
- **Otanerua Eco Viaduct Bridge** - Constructed as part of the Northern Gateway Alliance project extending the SH1 motorway north of Auckland to Puhoi. At Otanerua a 256m long structure was built 36m above the stream level to minimise the impact on the native, dense bush with minimal impact on the environment and the resident, endangered fernbird.



Construction of the cable stay pylon on the Ormiston Road Cable Stay Bridge project in Manukau.

Water & Wastewater Infrastructure

Water and Wastewater - Value engineered, innovative solutions

For over 20 years, Fulton Hogan has been assisting local authorities in designing, constructing, augmenting and managing water and wastewater infrastructure throughout New Zealand.

To support asset owners and managers in their quest to improve infrastructure, Fulton Hogan employs a strong team of civil, mechanical and electrical engineers, environmental, safety and quality professionals and commissioning experts. They each bring technical excellence and a can do attitude.

Our track record includes recent projects such as designing and building water treatment plants for Nelson and New Plymouth, as well as a storm water overflow tank facility for Auckland's North Shore City Council.

Our experience in these and other projects has enabled us to develop an expertise in the project management and complex engineering capabilities required for this work.

Key capabilities

- Complex pipeline systems for irrigation
- Drainage and storm water infrastructure
- Water treatment and filtration plants
- Catchment and reservoir constructions and rehabilitations.
- Waste water and sewage treatment facilities, including new plants, upgrades and augmentations
- All types of pipelines including large diameter reticulation sewers, live sewers, outfall and trunk sewers, rising mains, trunk water mains, storm water drainage, pumping stations and sewer remediation works.



Nelson water treatment plant.



Rosedale wastewater treatment plant, Auckland.

Energy Infrastructure



A comprehensive approach to complex projects

Drawing on our expertise, the strength of our vertically integrated business and our broad national footprint, Fulton Hogan is a trusted supplier of construction services for major energy infrastructure projects throughout New Zealand.

Recently we completed the civil works for the Kupe Gas Onshore Facility in Taranaki. This \$37M project involved the construction of the civil and structural facilities for the on-shore gas production plant. Fulton Hogan also maintains a branch in Taranaki which provides ongoing services to the vital energy sector in that region.

Fulton Hogan's experience means that we understand the stringent requirements around project management and health and safety that's required on any energy site. Safety is paramount for our customers in this sector and Fulton Hogan's safety management

systems, attitude and culture make us the ideal civil construction partner. Whilst our proven track record in project delivery means customers can rest assured their energy infrastructure projects will be delivered with reduced risk and a high level of control.

Key projects

- **Kupe Gas Onshore Facility, Taranaki, \$38M** – Civil earthworks, 8700m² concrete paving, 9500m³ of concrete structures, 12000m² of HDPE liners to site ponds and cathodic protection systems.
- **McKee LPG Facilities, Taranaki, \$5M** – Concrete foundations comprising 1700m³ concrete, construction of LPG bullet mound, oily water drainage system, firemain construction, security fencing and surface finishes.

Leaders in Precast

Fulton Hogan sets the standard as a leading precast concrete manufacturer in New Zealand. Our history of supplying high quality precast products to the construction industry throughout the South Pacific stretches back over 40 years, with speciality precast products designed and developed to satisfy the needs of the New Zealand construction industry.

Under the Stahlton Engineered Concrete brand, Fulton Hogan manufacture prestressed products including, bridge beams, precast panels, beams, spandrels, bleaches, stairs and specialist flooring systems Hollowcore, Double Tees, Flat Slab, Rib & In-fill and Shell Beams.

Manufactured out of our depots, these products are suitable for commercial and residential projects alike. Customers can focus on their wider build, while the team at Stahlton manage the logistics and delivery, an important advantage for our customers in the delivery of tight construction programmes.

Customers can save on lead times and the hassles of relying on external suppliers thanks to our capability to precast structural elements on site with our mobile precast stressing bed. This mobile facility has been used extensively in the Taranaki region for the construction of a number of reservoirs and can be transported and set up anywhere in New Zealand. For the rural sector, Fulton Hogan can provide complete precast concrete design, manufacture and installation service for farm bridges and other rural structures.

At the forefront of research and development of precast and construction technologies, Fulton Hogan continues to invest in new technology, equipment, advanced software solutions and education. Combined, these investments help improve efficiency and quality, delivering better value for money to our customers.

With an enduring commitment to sustainable construction solutions our customers can be assured they are part of a journey, leading the industry through recycling initiatives and waste minimisation.

Regardless of the complexity and difficulty, the team at Fulton Hogan are passionate and equipped to provide custom-made solutions which meet our customer's requirements.

Key project

- **Christchurch Southern Motorway, \$110M** - A 10.5km infrastructure design/build motorway project including seven major bridge structures with hollow core and precast concrete super tee decks. A 'dry-displacement' stone column technique was utilised for ground improvement under the foundations to the major bridge structures.



Double tee being placed at the Auckland Airport car park building.



Waikato University Performing Arts Centre, Hamilton.



Stone Column ground improvements taking place on the Christchurch Southern Motorway project.

Piling and Ground Improvements

Total foundation engineering solutions

Our dedicated piling team provides customers throughout New Zealand with total foundation engineering solutions on a wide range of civil, construction and building projects.

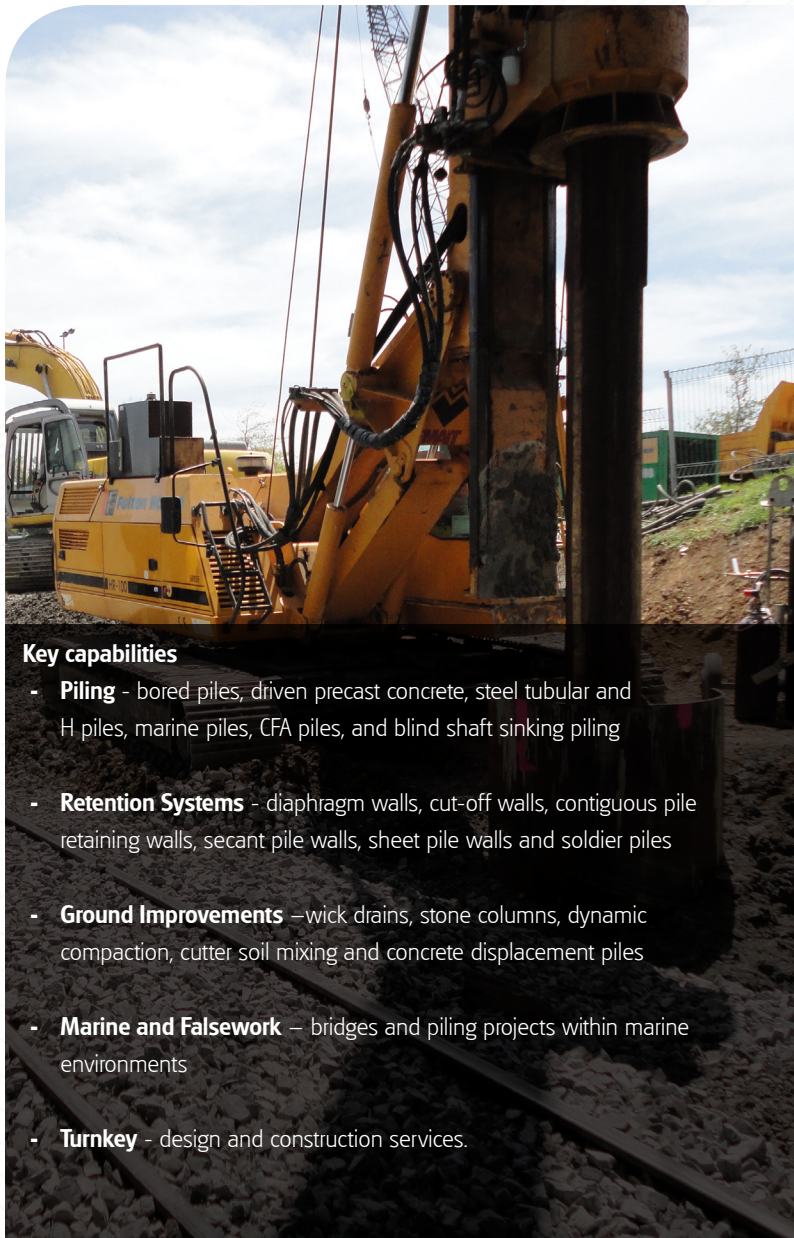
We can design and construct cost-effective piling and ground improvement solutions for the most complex and challenging projects and under a range of different contracts, including traditional alliancing, sub-alliancing, early contractor involvement and design and construct.

In recent years our expert team has successfully delivered foundation works on many of New Zealand's major infrastructure developments, including the Northern Gateway bridge piling, SH20 Mt Roskill bridges and retaining walls, the Newmarket Viaduct, East Taupo Arterial, Christchurch Southern Motorway, and Wellington Inner City Bypass.

To meet the challenging demands of foundation engineering, Fulton Hogan employs a strong team of managers, engineers, skilled labour, environmental, safety and quality professionals.

We believe that early specialist foundation contractor involvement is the most effective way to ensure efficient design, feasible and safe construction methods, and the timely delivery of foundation solutions ahead of programme and target cost estimates.

Our construction teams are well aware of the challenges of working in demanding environments and strictly apply Fulton Hogan's 'Zero Harm' safety policy. Our past projects are testimony to our ability in delivering significant projects safely, on time and on budget.



Key capabilities

- **Piling** - bored piles, driven precast concrete, steel tubular and H piles, marine piles, CFA piles, and blind shaft sinking piling
- **Retention Systems** - diaphragm walls, cut-off walls, contiguous pile retaining walls, secant pile walls, sheet pile walls and soldier piles
- **Ground Improvements** – wick drains, stone columns, dynamic compaction, cutter soil mixing and concrete displacement piles
- **Marine and Falsework** – bridges and piling projects within marine environments
- **Turnkey** - design and construction services.

Specialist Services

Alongside our major civil construction capabilities, Fulton Hogan also operate a Specialist Civil Works Division, focused on delivering construction services which require innovative solutions.

This division works closely with our precast operation so that we are able to fast track construction projects through the incorporation of prestressed and post tensioned precast concrete construction.

Specialist services include:

- Grouting
- Soil Nailing
- Drilling & Anchoring
- Shotcrete
- Post Tensioning
- Post Tensioned Floors
- Concrete Inspection/Repairs
- Cathodic Protection
- Restoration, rebuild and strengthening of Historic Structures and buildings
- Hydro Demolition
- Technical Services
- Rockfall Protection
- Pile Jacketing
- FRP Strengthening
- Ground Improvement: – stone piling, dynamic compaction, screw pile.



Alliance Contracting

Our financial stability as an unlisted public company (largely held by the founders' descendants and employees) and assets over \$1.5B means we can enter into collaborative partnerships, alliances and joint ventures confidently.

Key projects

- **Centennial Highway median barrier project, Wellington, \$14M**
- An Early Contractor Involvement (ECI) contract in which Civil South were involved in the design and construction of the structural elements. This was the NZTA's first ever ECI contract.
- **Christchurch Southern Motorway, \$110M** - A Design and Construct contract to be completed in December 2012. Civil South has constructed \$20M of roading structures on the project.
- **New Plymouth Wastewater Treatment Plant, \$10M** - This Design and Build project was competitively tendered and included extensive discussion and negotiation ensuring the customer's needs and expectations were fully addressed. This process upgrade and improvement project requires a superior level of interaction with the customer, designers and subcontractors to ensure the customer's expectations are not compromised.
- **Browns Rock Irrigation Intake, \$2M** - A negotiated lump sum contract which includes technically challenging works to be undertaken in parallel with the customer's delivery of water to irrigators in the region. Good communication and a cooperative approach with the customer and designers is critical to the success of the project.
- **Nelson Water Supply, \$26M** - A design, build, operate project undertaken by a Fulton Hogan / MWH Joint Venture consisting of a 42ML water treatment plant using microfiltration membrane technology, transfer pipelines and pump stations. Fulton Hogan have operated the plant on behalf of Nelson City Council since it was commissioned in 2004.
- **Dart2, \$45.4M** - Alliance contract with KiwiRail and ARTA consisting of 1km double tracking of railway; construct 2No road over rail bridges on Khyber Pass and Park Rd; 230No bored piles, Shotcrete in-situ panelled and Stone Strong retaining walls either side of the corridor. Construct a temporary train station on Boston Rd and a permanent railway station with access ways between the Khyber Pass and Park Road bridges.
- **Fulton Hogan and John Holland Joint Venture** - Drawing on Fulton Hogan's resources and supply chain in addition to John Holland's specialist business units, this Joint Venture continues to deliver world class solutions for customers across the rail, water, power and energy, industrial, and tunnelling sectors.

"Customers want a supplier who can deliver multiple facets of a project, reducing the need to consult with multiple parties. At Fulton Hogan we develop business partnerships with a shared goal of delivering best value. Engaging with other industry leaders allows both parties to leverage off each other's core strengths and supply chain. This approach proves popular with our customers as they benefit from a single supplier agreement and receive industry leading results."

Mike Howat

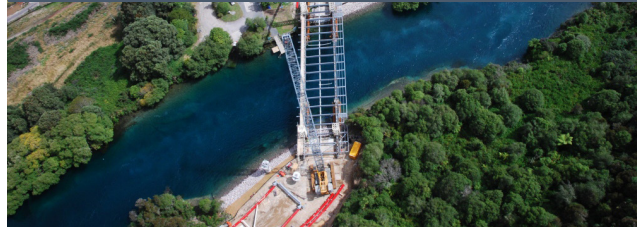
Executive Manager Major Projects and Civil
Fulton Hogan

Our Locations & Relevant Projects

Ormiston Road, Auckland



East Taupo Arterial



Nelson Water Treatment Plant

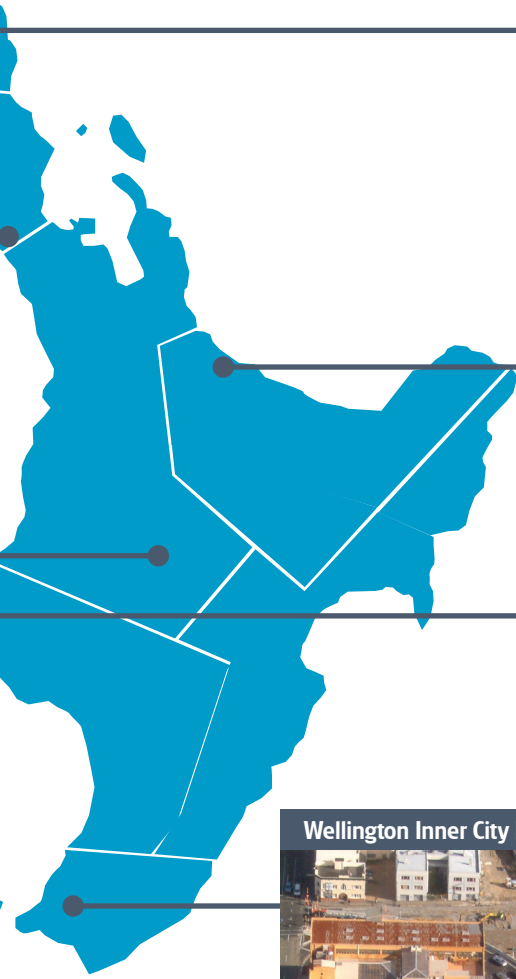


Candy's Bend- SH73, Arthurs Pass



Fairfield Motorway, Dunedin





Dent Street, Whangarei



Oropi Reserve, Bay of Plenty



Kupe Gas Onshore Facility, Taranaki



Wellington Inner City Bypass



Christchurch Southern Motorway



Civil South - Main Office

1115 Main North Road, Belfast
PO Box 76-165, Northwood,
Christchurch, 8548
Ph +64 3 375 9060
Fax +64 3 323 7346

Wellington Branch

Marine Parade, Petone
Wellington Mail Centre,
Lower Hutt, 5045
Wellington
Ph +64 4 568 5092
Fax +64 4 568 0709

New Plymouth Branch

203 Corbett Road
PO Box 3040
New Plymouth
Ph +64 6 755 9716

Civil North - Main Office

47 Airdrie Road, Ranui
Auckland 0612
PO Box 21124, Henderson,
Auckland 0650
Ph: +64 9 831 0107
Fax: +64 9 833 4408

Corporate Office

29 Sir William Pickering Drive
PO Box 39185, Harewood,
Christchurch 8545
Telephone +64 3 357 1400
Facsimile +64 3 357 1450

Civil North

47 Airdrie Road, Ranui
Auckland 0612
PO Box 21124, Henderson,
Auckland 0650
Ph: +64 9 831 0107
Fax: +64 9 833 4408

Civil South

1115 Main North Road, Belfast,
Christchurch
PO Box 76165, Northwood,
Christchurch 8548
Telephone +64 3 375 9060
Facsimile +64 3 323 7346

Stahlton Head Office

133 Waterloo Road, Hornby, Christchurch
PO Box 8369, Riccarton, Christchurch
Telephone +64 3 344 3014
Freephone 0800 STAHLTON
(0800 782 458)
Facsimile +64 3 344 3018



www.fultonhogan.com

info@fultonhogan.com