

CHANGE THE WAY YOU SEE YOUR BUSINESS WITH BDO & CRUNCHBOARDS

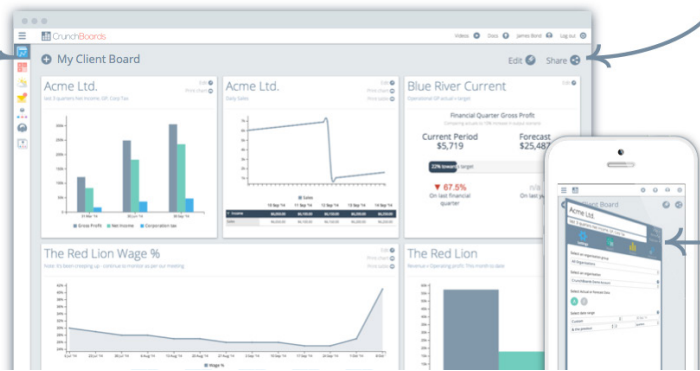


CrunchBoards

We can build customisable Boards for you and your team. Focus on what's important easily have all your critical financial KPIs in one place

Collaboration is key. We'll share Boards with you so you can see your business effortlessly

You can view CrunchBoards on your phone, web or tablet - wherever you are, you're in the know



WHAT IS CRUNCHBOARDS?

CrunchBoards is a customised system that has been designed to work with Xero to provide you with meaningful data and analysis to help you run your business more effectively. Up until now you may have used a range of spreadsheets to analyse your data and pull your business story together at the end of each month.

WHAT WILL CRUNCHBOARDS DO FOR MY BUSINESS?

Crunchboards does all that for you, and makes your end of month decisions fast, accurate & effortless.

It will help you to:

- ▶ See how the business is performing against targets

- ▶ Look at multiple entities, scenarios and KPIs side by side
- ▶ Share key information with team members
- ▶ Share in "real time" with your advisers (your BDO team can see what you can see)
- ▶ Get automatic live data updates from Xero
- ▶ Customise the reports that **you** need for **your** business

For more info go here:

www.bdo.co.nz/resources/latest-news/crunchboards-roll-out



Simple or complex 3-way P&L, Balance sheet & cashflow forecasting - see actuals v. forecast



Limitless organisations viewed side by side



Limitless users for collaboration with no restrictions across your team



Completely flexible data-design - it's your business, your way



User permissions get granular and expose Xero. Now managers on the ground have access



Real, custom operational KPIs with our powerful Formula Builder

To find out more about BDO, please contact your nearest office on

0800 379 528

FOR MORE ON CRUNCHBOARDS CONTACT ONE OF OUR 15 OFFICES NATIONWIDE

KERIKERI

Homestead Road,
Kerikeri
T: +64 9 407 7250
E: kerikeri@bdo.co.nz

WHANGAREI

49 John Street,
Whangarei
T: +64 9 430 0471
E: northland@bdo.co.nz

AUCKLAND CBD

BDO Tower, Level 8,
120 Albert Street,
Auckland
T: +64 9 379 2950
E: auckland@bdo.co.nz

AUCKLAND NORTH SHORE

Level 10, BDO Tower
19 Como Street, Takapuna,
North Shore
T: +64 9 486 2125
E: auckland@bdo.co.nz

AUCKLAND EAST TAMAKI

Level 2, BDO House,
116 Harris Road,
East Tamaki
T: +64 9 274 9340
E: auckland@bdo.co.nz

HAMILTON

Level 1, BDO Building,
1026 Victoria Street,
Hamilton
T: +64 7 839 2106
E: waikato@bdo.co.nz

TAURANGA

Level 1, The Hub,
525 Cameron Road,
Tauranga
T: +64 7 571 6280
E: tauranga@bdo.co.nz

ROTORUA

1130 Pukaki Street,
Rotorua
T: +64 7 347 9087
E: rotorua@bdo.co.nz

GISBORNE

1 Peel Street,
Gisborne
T: +64 6 869 1400
E: gisborne@bdo.co.nz

NEW PLYMOUTH

10 Young Street,
New Plymouth
T: +64 6 759 9034
E: newplymouth@bdo.co.nz

NAPIER

86 Station Street,
Napier
T: +64 6 835 3364
E: napier@bdo.co.nz

PALMERSTON NORTH

32 Amesbury Street,
Palmerston North
T: +64 6 358 4163
E: manawatu@bdo.co.nz

WELLINGTON

Level 1, Chartered Accountants
House,
50 Customhouse Quay
Wellington
T: +64 4 472 5850
E: wellington@bdo.co.nz

CHRISTCHURCH

30 Sir William Pickering Drive,
Burnside,
Christchurch
T: +64 3 379 5155
E: christchurch@bdo.co.nz

INVERCARGILL

46 Don Street,
Invercargill
T: +64 3 218 2959
E: invercargill@bdo.co.nz

www.bdo.co.nz

twitter.com/bdonewzealand



facebook.com/bdonewzealand



linkedin.com/company/bdo-new-zealand

