

**Manufacturers of Fine Instruments & Engine Controls****TRUCK • BUSES • MARINE • INDUSTRIAL • AIRCRAFT**

In 1952, While in the trucking business, John T. Hewitt designed and developed the first pyrometer (E.G.T.) used for trucks. In 1955 Hewitt Industries was formed and began developing the market for users and O.E.M.'s around the world. Hewitt maintains this leadership through the highest quality in design and product reliability.

Continuing improvements in manufacturing and worldwide patents for product design has allowed Hewitt Industries to supply it's customers, users and O.E.M.'s with attractive, superior products at lower prices.

**ISO 9001 : 2008****PRODUCTS:****INSTRUMENTS**

LIQUID LEVELS / PRESS. GAUGES  
PYROMETERS / HOUR METERS  
TEMP. GAUGES

**CONTROL MODULES**

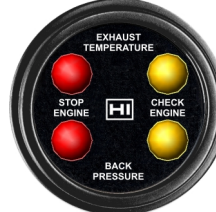
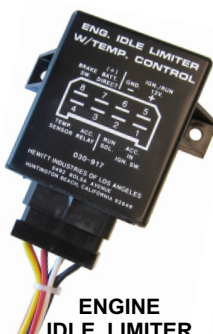
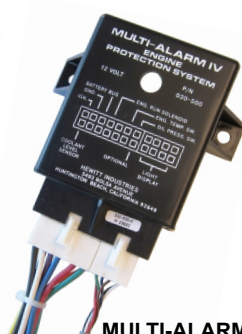
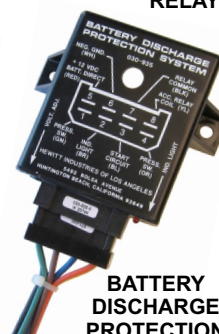
MULTI - ALARMS / SPEED SWITCHES  
BATT. DISCHARGE PROTECTION SYS.  
IDLE LIMITER / EXHAUST TEMP.  
BACK PRESSURE SYSTEM  
VEHICLE SPEED LIMITER  
PYRO-SWITCH / TIME DELAY

**SENDER / SENSOR  
TEMP. - PRESS. SWITCH**

COOLANT LEVEL / VALVE  
SOLENOID / SIGNAL GENERATOR  
SINGLE - DUAL MAGNETIC SENSOR  
ISOLATOR / THERMOCOUPLES

**TESTERS**

MULTI - ALARM / PYROMETER  
SPEED SIMULATOR / BATTERY  
DISCHARGE PROTECTION SYSTEM

**SINGLE  
PRESSURE GAUGES****DUAL  
PRESSURE GAUGES****LIQUID  
LEVELS****BACK PRESS.  
EXHAUST TEMP.****DIAL COLOR****PYROMETER  
THERMOCOUPLES****SPEED  
SWITCH****SIGNAL GEN.****RELAY****PYRO SWITCH****ENGINE  
IDLE LIMITER****MULTI-ALARM****BATTERY  
DISCHARGE  
PROTECTION**



## HEWITT INDUSTRIES

5492 BOLSA AVE. HUNTINGTON BEACH, CA 92649

PH. (714) 891-9300

FAX. (714) 897-7632

WEBSITE: [www.hewittindustries.com](http://www.hewittindustries.com)

E-MAIL: [sales@hewittindustries.com](mailto:sales@hewittindustries.com)

## ***PRODUCTS***

### **LIQUID LEVELS**

ENGINE OIL LEVEL  
FUEL LEVEL  
POTABLE WATER  
WASTE WATER  
HYDRAULIC LEVEL  
GEAR OIL  
BACK PRESSURE

### **SENDER / SENSOR / TEMPERATURE**

SIGNAL GENERATOR

### **CONTROL MODULES**

BACK PRESSURE MONITORING SYSTEM  
MULTI - ALARM  
BATTERY DISCHARGE PROTECTION  
ENGINE IDLE LIMITER  
ENGINE COOL DOWN  
VEHICLE SPEED LIMITING SYSTEM

### **PYROMETERS**

2" PYROMETERS  
3" PYROMETERS

### **PRESSURE GAUGES**

SINGLE BOURDON PRESSURE GAUGES  
DUAL BOURDON PRESSURE GAUGES  
ISOLATOR  
DIFFERENTIAL PRESSURE GAUGES

### **THERMOCOUPLES**

1/8" THERMOCOUPLES  
1/4" THERMOCOUPLES

### **AIRCRAFT**

SINGLE AND DUAL PRESSURE GAUGES

### **THERMOCOUPLE EXTENSION WIRE**



**HEWITT INDUSTRIES**

5492 BOLSA AVE. HUNTINGTON BEACH, CA 92649

PH. (714) 891-9300

FAX. (714) 897-7632

WEBSITE: [www.hewittindustries.com](http://www.hewittindustries.com)

E-MAIL: [sales@hewittindustries.com](mailto:sales@hewittindustries.com)

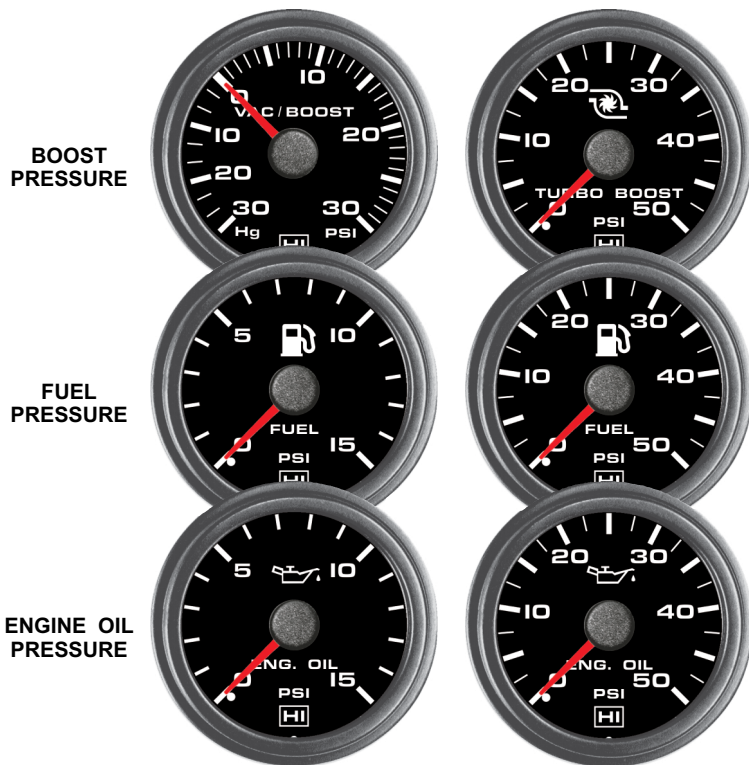
## **SINGLE BOURDON PRESSURE GAUGES**

TRUCK • BUSES • MARINE • INDUSTRIAL • AIRCRAFT

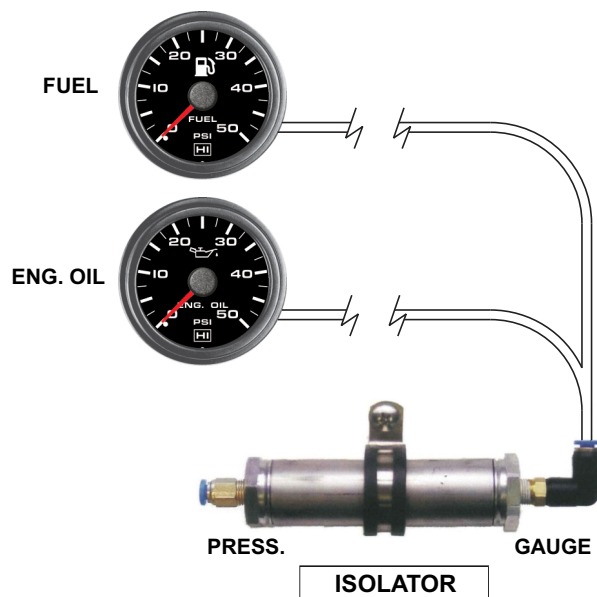
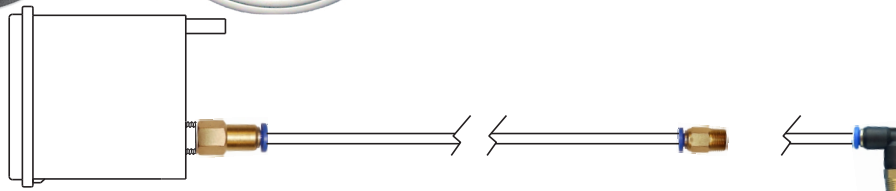
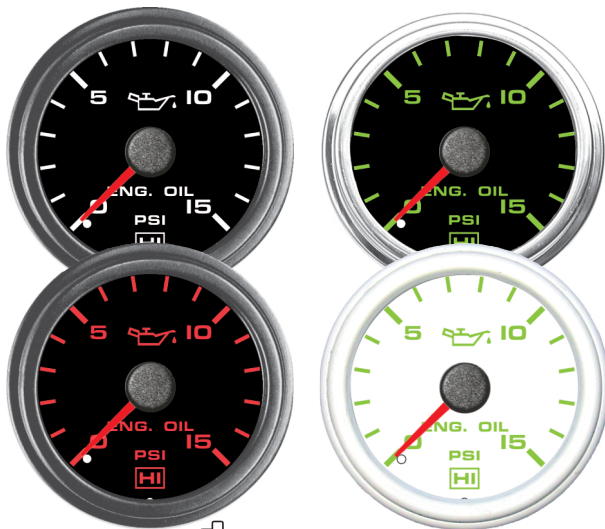
- INTRINSICALLY SAFE
- L.E.D. ILLUMINATION

- ACCURACY – FULL SCALE  $\pm 1\%$
- EASY TO INSTALL

- WARRANTED FOR 3 YEARS
- NO LIMIT USEFUL LIFE



DIAL COLOR



An Isolator for remote installation Single and Dual pressure gauges for Fuel and Oil in the compartment. **FOR ISOLATOR ALL OIL.**

The 4mm tube, which will tolerate  $-79^{\circ}$  to  $400^{\circ}$  F, is similar to the brake lines used on heavy trucks and busses.

Instrument and 9 feet tube and accessories.

It can be extended in excess of and that only 100 ft. for marine applications.



**HEWITT INDUSTRIES**

5492 BOLSA AVE. HUNTINGTON BEACH, CA 92649

PH. (714) 891-9300

FAX. (714) 897-7632

WEBSITE: [www.hewittindustries.com](http://www.hewittindustries.com)

E-MAIL: [sales@hewittindustries.com](mailto:sales@hewittindustries.com)

## DUAL BOURDON PRESSURE GAUGES

TRUCK • BUSES • MARINE • INDUSTRIAL • AIRCRAFT

- INTRINSICALLY SAFE
- L.E.D. ILLUMINATION

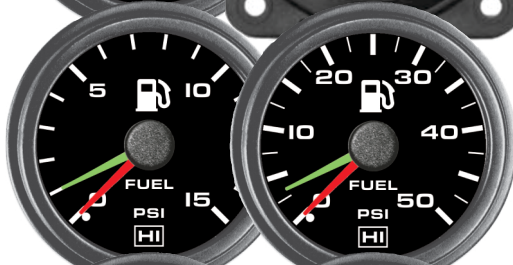
- ACCURACY – FULL SCALE  $\pm 1\%$
- EASY TO INSTALL

- WARRANTED FOR 3 YEARS
- NO LIMIT USEFUL LIFE

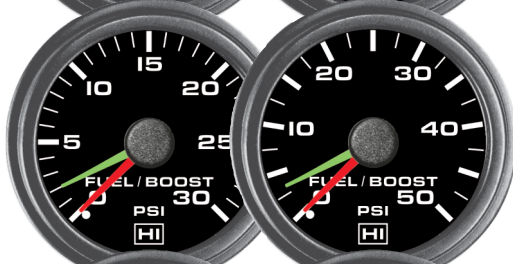
ENGINE OIL  
PRESSURE



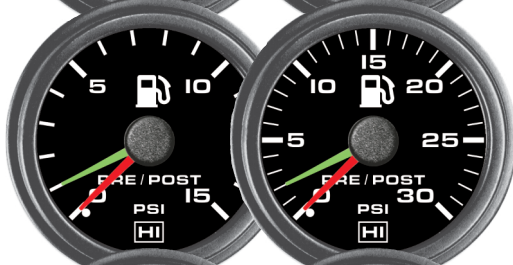
FUEL  
PRESSURE



FUEL / BOOST  
PRESSURE



FUEL  
PRE / POST



TURBO BOOST  
PRESSURE



FUEL



ENG. OIL



ISOLATOR

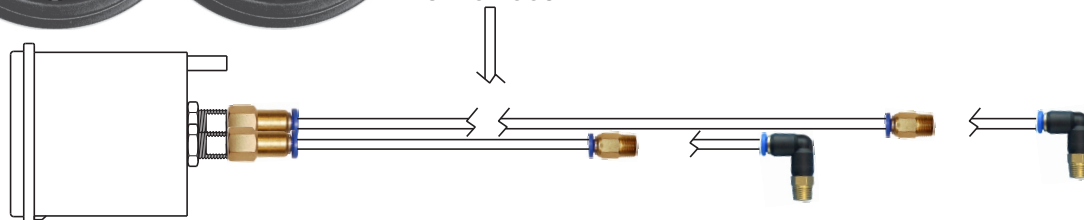
An Isolator for remote installation Single and Dual pressure gauges for Fuel and Oil in the compartment. **FOR ISOLATOR ALL OIL.**

The 4mm tube, which will tolerate  $-79^{\circ}$  to  $400^{\circ}$  F, is similar to the brake lines used on heavy trucks and busses.

Instrument and 9 feet tube and accessories.

It can be extended in excess of and that only 100 ft. for marine applications.

TURBO BOOST







## HEWITT INDUSTRIES

5492 BOLSA AVE. HUNTINGTON BEACH, CA 92649

PH. (714) 891-9300

FAX. (714) 897-7632

WEBSITE: [www.hewittindustries.com](http://www.hewittindustries.com)

E-MAIL: [sales@hewittindustries.com](mailto:sales@hewittindustries.com)

### AIRCRAFT

#### SINGLE AND DUAL BOURDON PRESS. GAUGES

- INTRINSICALLY SAFE
- L.E.D. ILLUMINATION

- ACCURACY – FULL SCALE  $\pm 1\%$
- EASY TO INSTALL

- WARRANTED FOR 3 YEARS
- NO LIMIT USEFUL LIFE

##### SINGLE



0 - 15 PSI  
0 - 30  
0 - 50



0 - 15 PSI  
0 - 30  
0 - 50  
0 - 80  
0 - 100



0 - 15 PSI  
0 - 30



FUEL / BOOST  
0 - 15 PSI  
0 - 30

##### DUAL



0 - 15 PSI  
0 - 30  
0 - 50



0 - 15 PSI  
0 - 30  
0 - 50  
0 - 80  
0 - 100



0 - 15 PSI  
0 - 30



FUEL



ENG. OIL



PRESS.

GAUGE

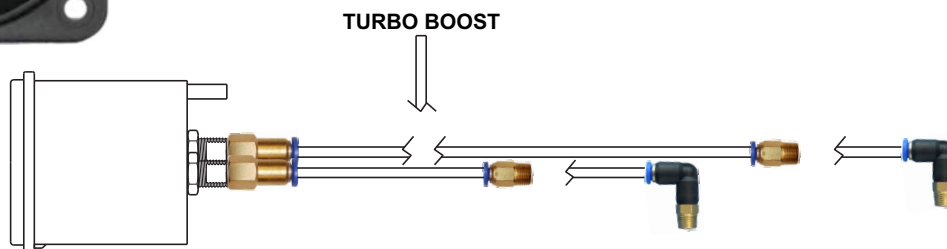
ISOLATOR

An Isolator for remote installation for Single and Dual pressure gauges is necessary for Fuel and Oil for entering the cabin area. **FOR ISOLATOR ALL OIL.**

The 4mm tube, which will tolerate -79° to 400° F, is similar to the brake lines used on heavy trucks and busses.

Instrument and 9 feet tube and accessories.

It can be extended in excess of and that only 100 ft. for marine applications.





**HEWITT INDUSTRIES**

5492 BOLSA AVE. HUNTINGTON BEACH, CA 92649

PH. (714) 891-9300

FAX. (714) 897-7632

WEBSITE: [www.hewittindustries.com](http://www.hewittindustries.com)

E-MAIL: [sales@hewittindustries.com](mailto:sales@hewittindustries.com)

## ***DIFFERENTIAL PRESSURE GAUGES***

TRUCK • BUSES • MARINE • INDUSTRIAL • AIRCRAFT

• INTRINSICALLY SAFE

• L.E.D. ILLUMINATION

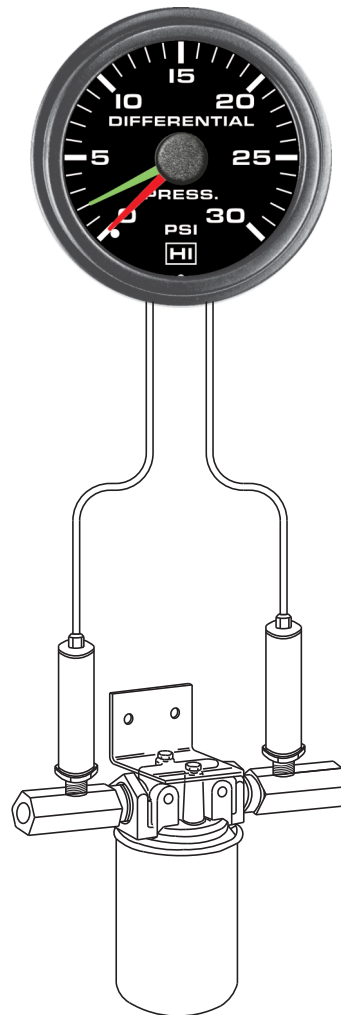
• ACCURACY – FULL SCALE  $\pm 1\%$

• EASY TO INSTALL

• WARRANTED FOR 3 YEARS

• NO LIMIT USEFUL LIFE

Differential pressure on both sides of the filter showing there is a restriction on filter fuel.



A 6mm tube connected to the filter before the pressure gauges. The isolator will tolerate 70 psi and can be mounted as required.



**HEWITT INDUSTRIES**

5492 BOLSA AVE. HUNTINGTON BEACH, CA 92649

PH. (714) 891-9300  
FAX. (714) 897-7632

WEBSITE: [www.hewittindustries.com](http://www.hewittindustries.com)  
E-MAIL: [sales@hewittindustries.com](mailto:sales@hewittindustries.com)

RV • TRUCK • BUSES • MARINE • INDUSTRIAL • AIRCRAFT

• INTRINSICALLY SAFE • ACCURACY—FULL SCALE  $\pm 1\%$  • WARRANTED FOR 3 YEARS

• L.E.D. ILLUMINATION • EASY TO INSTALL • NO LIMIT TO USEFUL LIFE

HOME

PRODUCTS

CONTACT

ABOUT

DOCUMENT

## SIGNAL GENERATOR



SINGLE  
GENERATOR

FEMALE ADAPTER  
(INTERCHANGEABLE)

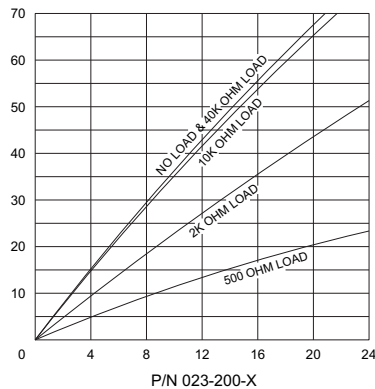
PART NUMBERS:

760-207 = .104 SQ  
760-208 = .150 SQ  
760-209 = .187 SQ  
760-224 = .152 RD  
760-225 = .187 RD  
760-226 = .203 RD



DUAL  
GENERATOR

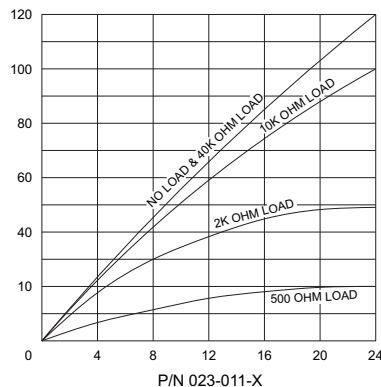
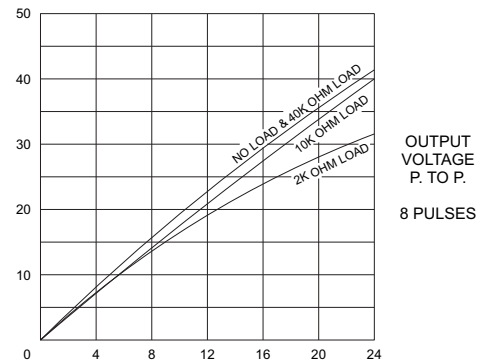
6 P/N 023-200-X



MALE ADAPTER  
(INTERCHANGEABLE)

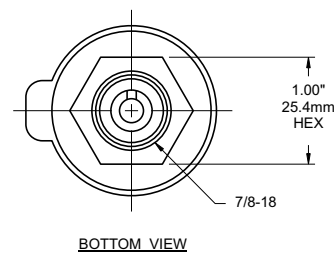
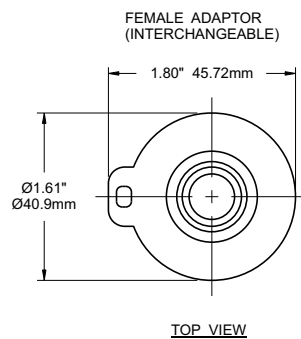
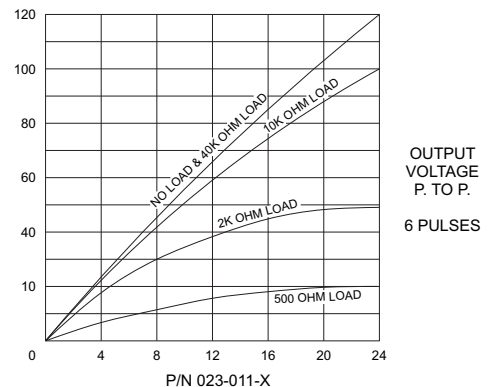
PART NUMBERS:

760-260 = .104 SQ  
760-261 = .150 SQ  
760-262 = .187 SQ  
760-263 = .152 RD  
760-264 = .187 RD  
760-265 = .203 RD



JAPAN TYPE METRIC

"DIN" TYPE METRIC



# VEHICLE SPEED LIMITING SYSTEM

PART NO. KIT 190-062

| QTY.  | P/N        | DESCRIPTION               |
|-------|------------|---------------------------|
| 1     | 030-300-0  | ECM                       |
| 1     | 025-221-20 | FCV 14mm                  |
| 1     | 025-222    | PRV                       |
| 1     | 071-750    | HARNESS ASSY.             |
| 1     | 071-412    | HARNESS ASSY.             |
| 3     | 063-048    | STRAIGHT HOSE FITTING     |
| 2     | 063-051    | 14mm BANJO FITTING        |
| 8 FT. | 721-105    | 1/4" FUEL LINE - FLEXIBLE |
| 6     | 709-206    | CLAMP, FUEL HOSE          |
| 6     | 713-185    | LEAD / WIRE SEAL          |
| 1     | 714-505    | ECM SEAL                  |
| 1     | 712-692    | TERMINAL - TACHOGRAPH     |
| 2     | 063-049    | 90° HOSE FITTINGS         |
| 2     | 712-067    | SPADE TERMINAL            |
| 2     | 712-087    | TAP SPLICE                |
| 12    | 713-164    | TIE WRAP                  |
| 11FT. | 721-201    | CONDUIT                   |
|       |            | OPTIONAL                  |
| 1     | 023-XXX    | SPEED SENDER              |
| 1     | 071-215    | HARNESS ASSY.             |

## MODULE SELECTION:

P/N 030-300-0 HIGH FREQUENCY  
P/N 030-300-L-0 LOW FREQUENCY

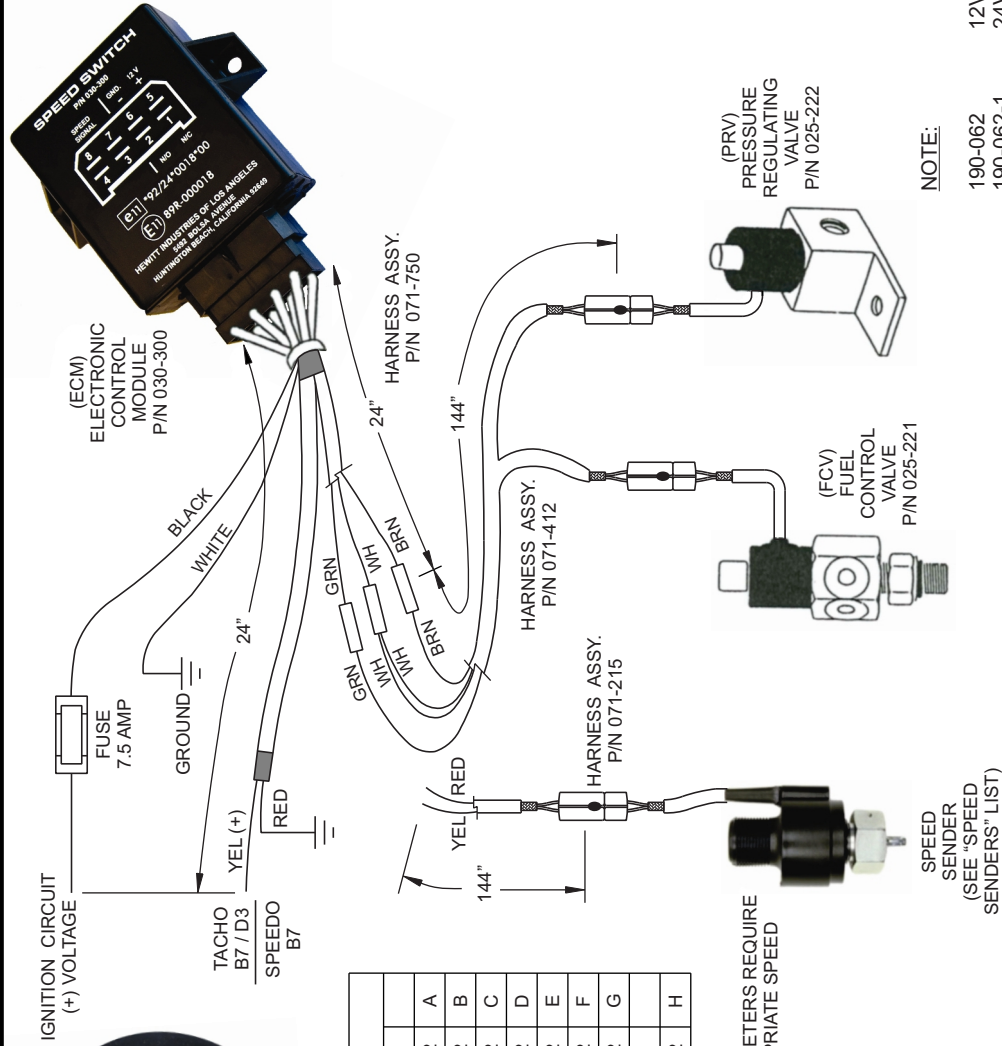


TACHOGRAPH

| SPEED SENDER      |           |
|-------------------|-----------|
| DRIVE SIZE        | P/N       |
| .104 SQ.          | 023-002 A |
| .150 SQ.          | 023-002 B |
| .187 SQ.          | 023-002 C |
| .152 RD.          | 023-002 D |
| .187 RD.          | 023-002 E |
| .203 RD.          | 023-002 F |
| DIN - 22.5mm.     | 023-002 G |
| JAPAN             |           |
| .187 RD. - 22.5mm | 023-002 H |

## NOTES:

- VEHICLES WITH MECHANICAL SPEEDOMETERS REQUIRE A SPEED SENDER. SELECT THE APPROPRIATE SPEED SENDER. EXAMPLE: 023-002-E



## APPROVALS

E11 89R-000018

e11 \*92/24\*0018\*00

| REVISIONS              |              | TOLERANCES                 |  |
|------------------------|--------------|----------------------------|--|
| DESCRIPTION            | DATE         | UNLESS OTHERWISE SPECIFIED |  |
| A NEW RELEASE          | 7/14/02      | X = ± .030                 |  |
| B REVISED PER ECO #500 | 03/07/10 JAG | XX = ± .010                |  |
|                        |              | XXX = ± .055               |  |
|                        |              | FRACTIONS = ± 1/32         |  |
|                        |              | ANGLES = ± 2°              |  |
|                        |              | SCALE: NONE                |  |

|                                  |                |
|----------------------------------|----------------|
| HEWITT INDUSTRIES OF LOS ANGELES |                |
| TITLE: SPEED LIMITING SYSTEM     |                |
| DRAWN BY JAG                     | PART NO.       |
| APPR. BY                         | DATE: 07/14/02 |
| KIT 190-062                      |                |



VEHICLE SPEED LIMITING SYSTEM

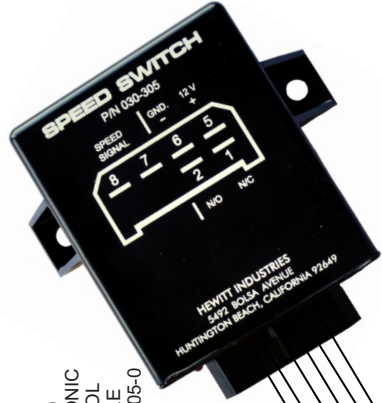
PART NO. KIT 190-063

| QTY.           | P/N       | DESCRIPTION             |
|----------------|-----------|-------------------------|
| 1              | 030-305-0 | ECM                     |
| 1              | 025-223   | FCV                     |
| 1              | 071-526   | HARNESS ASSY.           |
| 1              | 071-225   | HARNESS ASSY.           |
| 6 FT.          | 721-105   | 1/4" FUEL LINE-FLEXIBLE |
| 4              | 709-206   | CLAMPS, FUEL HOSE       |
| 2              | 713-185   | LEAD / WIRE SEALS       |
| 2              | 063-048   | STRAIGHT HOSE FITTINGS  |
| 1              | 714-505   | ECM SEAL                |
| 1              | 071-111   | TACHOGRAPH TERMINAL     |
| OPTIONAL PARTS |           |                         |
| 1              | SEE NOTE  | SPEED SENDER            |
| 1              | 071-215   | SPEED SENDER HARNESS    |
| 2              | 063-050   | 12mm BANJO FITTINGS     |
| 2              | 063-051   | 14mm BANJO FITTINGS     |



TACHOGRAPH

| SPEED SENDER               |           |
|----------------------------|-----------|
| DRIVE SIZE                 | P/N       |
| .104 SQ.                   | 023-002 A |
| .150 SQ.                   | 023-002 B |
| .187 SQ.                   | 023-002 C |
| .152 RD.                   | 023-002 D |
| .187 RD.                   | 023-002 E |
| .203 RD.                   | 023-002 F |
| DIN - 22.5mm. EUROPEAN     | 023-002 G |
| .187 RD. - 22.5mm JAPANESE | 023-002 H |



(ECM)  
ELECTRONIC  
CONTROL  
MODULE  
P/N 030-305-0



IGNITION CIRCUIT  
(+) VOLTAGE

BLACK  
WHITE  
GROUND

HARNESS ASSY.  
P/N 071-526

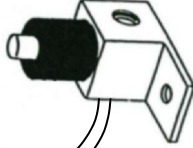
WHT  
GRN

YEL (+)  
RED

HARNESS ASSY.  
P/N 071-225

RED  
YEL

HARNESS ASSY.  
P/N 071-215



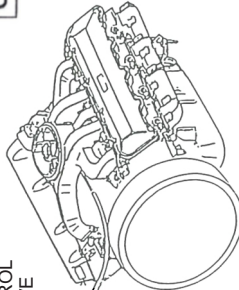
FUEL  
CONTROL  
VALVE  
P/N 025-223

SPEED  
SENDER  
(SEE TABLE  
FOR P/N)

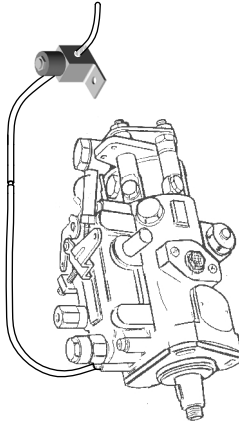
APPROVALS

(E11) 89R-000018

e11 \*92/24\*0018\*00



6.2 / 6.5 L G.M. DIESEL ENGINE



ROTARY PUMP

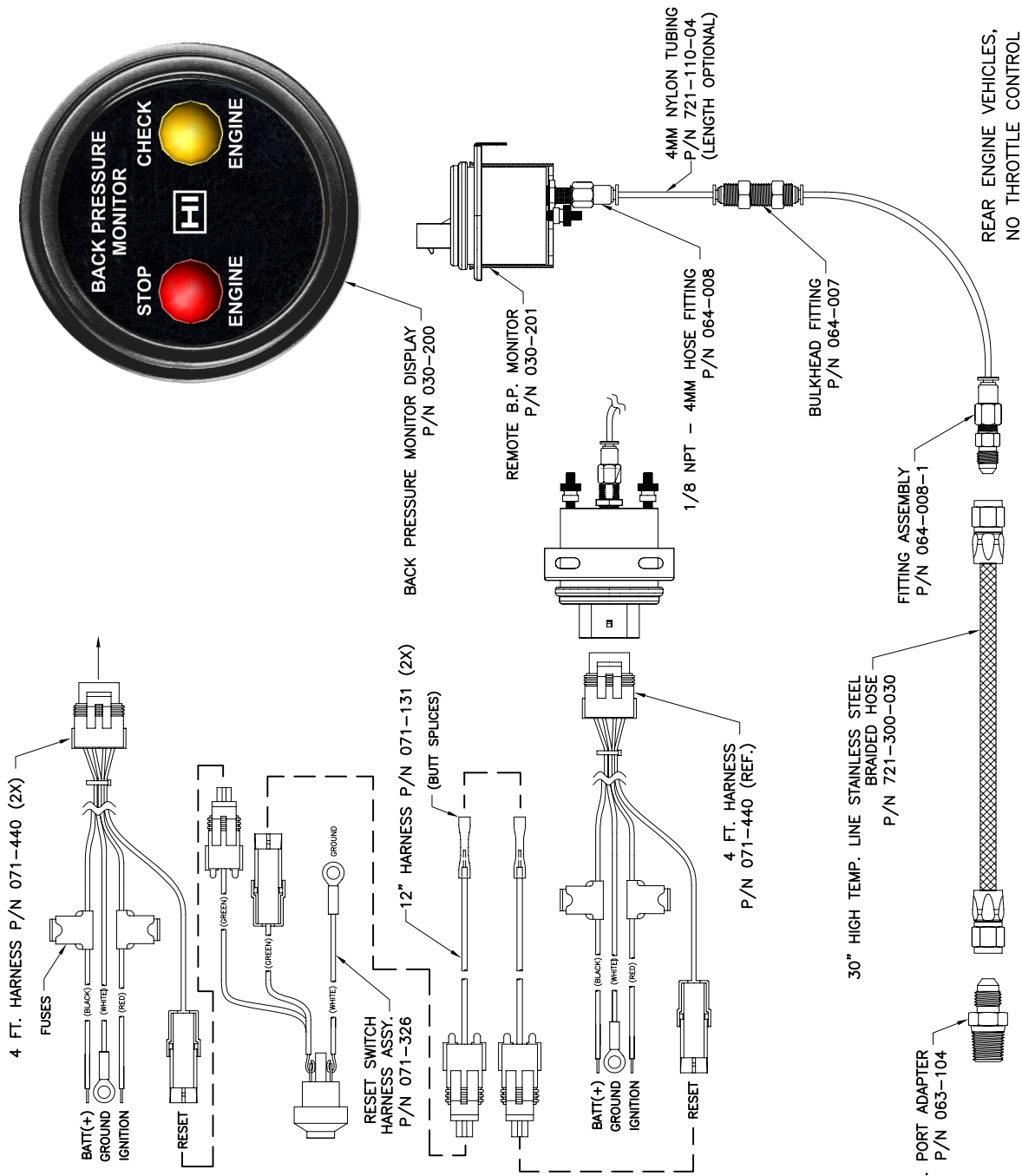
NOTE:

190-063 12V  
190-063-1 24V

| REVISIONS  |                       | TOLERANCES                          |          |
|--|-----------------------|-------------------------------------|----------|
| REV  | DESCRIPTION           | DATE                                | BY       |
| A  | NEW RELEASE           | 03/12/09                            | ECM      |
| B  | REVISED PER ECO # 500 | 03/01/10                            | JAG      |
| UNLESS OTHERWISE SPECIFIED<br>ALL DIMENSIONS IN INCHES |                       | TITLE:                              |          |
|  |                       | HEWITT INDUSTRIES<br>OF LOS ANGELES |          |
|  |                       | SPEED LIMITING SYSTEM               |          |
|  |                       | DRAWN BY                            | JAG      |
|  |                       | APPR. BY                            | PART NO. |
|  |                       | DATE:                               | 07/14/02 |
|  |                       | SCALE:                              | NONE     |
|  |                       | KIT 190-063                         |          |

| QTY | P/N         | DESCRIPTION                  |
|-----|-------------|------------------------------|
| 1   | 030-201     | REMOTE BP/TEMP. MONITOR      |
| 1   | 030-200     | DASH B.P. MONITOR DISPLAY    |
| 1   | 063-104     | BACK PRESS. PORT ADAPTER     |
| 1   | 064-008-1   | FITTING ASSEMBLY             |
| 1   | 064-007     | BULKHEAD FITTING             |
| 2   | 071-440     | MODULE WIRING HARNESS        |
| 1   | 071-326     | RESET SWITCH HARNESS         |
| 2   | 071-131     | RESET EXTENSION HARNESS      |
| 1   | 721-110-04  | 4MM NYLON TUBING             |
| 1   | 721-300-030 | HIGH TEMP. LINE STAIN. STEEL |
|     |             |                              |
|     |             |                              |

NOTE: HARNESS AND TUBE LENGTHS TO BE DETERMINED BY CUSTOMER.



- FEATURES:
1. MONITORS EXHAUST BACK PRESSURE.
  2. LOW-LIMIT SENSE LIGHTS "CHECK ENGINE" - 3.6 PSI TYPICAL.
  3. HIGH-LIMIT SENSE LIGHTS "STOP ENGINE" AND LATCHES LIGHT ON. 5.1 PSI TYPICAL.
  4. FACTORY-SET LOW AND HIGH PRESSURE LEVELS MAY BE CUSTOMER-DEFINED.
  5. TO CLEAR LIGHTS, GROUND "RESET" WIRE 0.5 SECONDS MINIMUM.

| REVISONS |                                     |         | TOLERANCES |     |   |
|----------|-------------------------------------|---------|------------|-----|---|
| REV.     | DESCRIPTION                         | EO#     | DATE       | BY  | UNLESS OTHERWISE SPECIFIED:   |
| A        | NEW RELEASE                         | ECO 058 | 01/20/04   | BCT | DIMENSIONS ARE IN INCHES.   |
| B        | CHANGE HARNESS CONFIG'S. NEW MODULE | ECO 058 | 12/07/04   | BCT | METRIC EQUIVALENTS ARE IN [BRACKETS]:   |
| C        | REVISED PER ECO #                   | ECO 367 | 11/29/07   | EGM | .X = .030 [0.76]<br>.XX = .010 [0.25]<br>.XXX = .005 [0.13]<br>FRACTIONS = 1/32<br>ANGLES = ±1° |
|          |                                     |         |            |     | SCALE: NONE   |
|          |                                     |         |            |     |   |
|          |                                     |         |            |     |   |
|          |                                     |         |            |     |   |
|          |                                     |         |            |     |   |
|          |                                     |         |            |     |   |

| HEWITT INDUSTRIES OF LOS ANGELES       |                |              |
|--|----------------|--------------|
| TITLE: BACK PRESSURE MONITORING SYSTEM |                |              |
| DRAWN BY: E. MARIANO                   | VT NO. 194-719 |              |
| APPR. BY: J. HEWITT                    |                |              |
| DATE: 10/23/07                         |                |              |
|  |                | SHEET 1 OF 2 |





## HEWITT INDUSTRIES

5492 BOLSA AVE. HUNTINGTON BEACH, CA 92649

PH. (714) 891-9300

FAX. (714) 897-7632

WEBSITE: [www.hewittindustries.com](http://www.hewittindustries.com)

E-MAIL: [sales@hewittindustries.com](mailto:sales@hewittindustries.com)

# ENGINE COOL DOWN

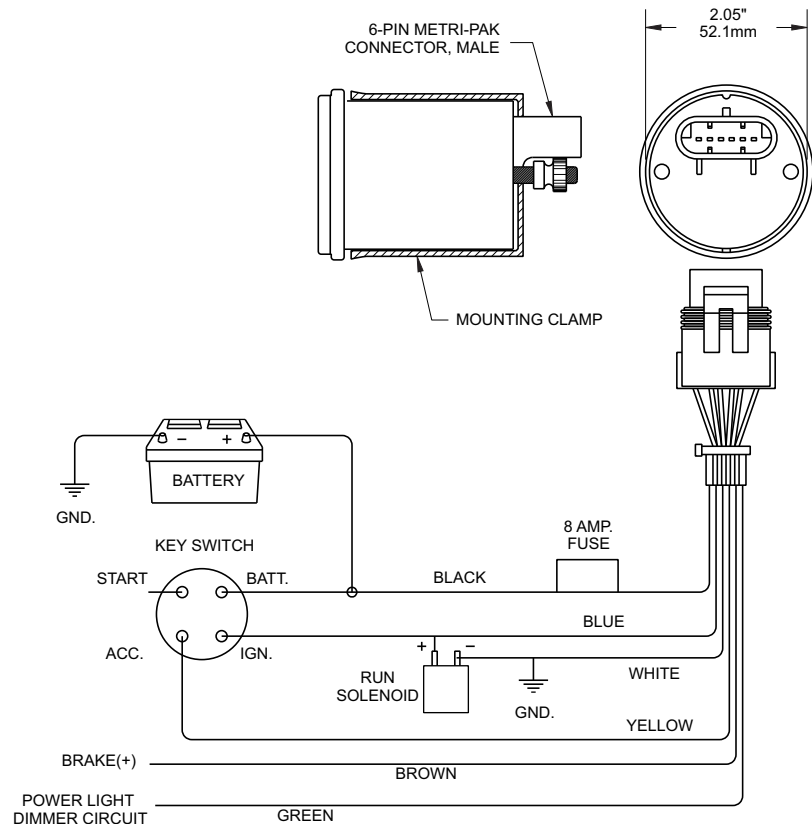
TRUCK • BUSES • MARINE • INDUSTRIAL

COOL DOWN THE TURBOCHARGER — BEFORE SHUTDOWN



P/N 030-904

- ANY ENGINE
- EASY TO INSTALL
- L.E.D. ILLUMINATION
- LOW COST
- WARRANTED FOR 3 YEARS
- NO LIMIT TO USEFUL LIFE



### DESCRIPTION:

The controller is designed to delay engine shutdown to allow the turbocharger to cool. The module features a 1 or 3 minute shutdown delay and an off selector switch. An LED indicator and a theft deterrent shut down circuit is included, which is activated by the brake pedal switch.

### DEVICE OPERATION:

With the engine running, select either the 1 or 3 minute delay feature, the red LED light indicates the module is set. The time period of 1 or 3 minutes will start once the ignition key is turned off. After the time period of 1 or 3 minutes has elapsed, the module will enable into overdrive shutdown mode. During the time delay, if the foot brake is applied, the module will go in shutdown mode.





**HEWITT INDUSTRIES**

5492 BOLSA AVE. HUNTINGTON BEACH, CA 92649

PH. (714) 891-9300

FAX. (714) 897-7632

WEBSITE: [www.hewittindustries.com](http://www.hewittindustries.com)

E-MAIL: [sales@hewittindustries.com](mailto:sales@hewittindustries.com)

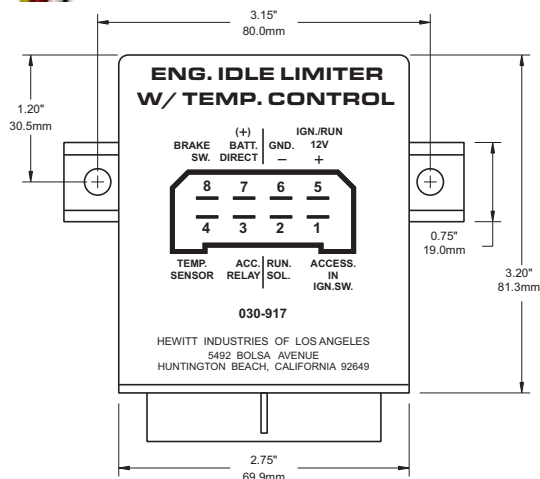
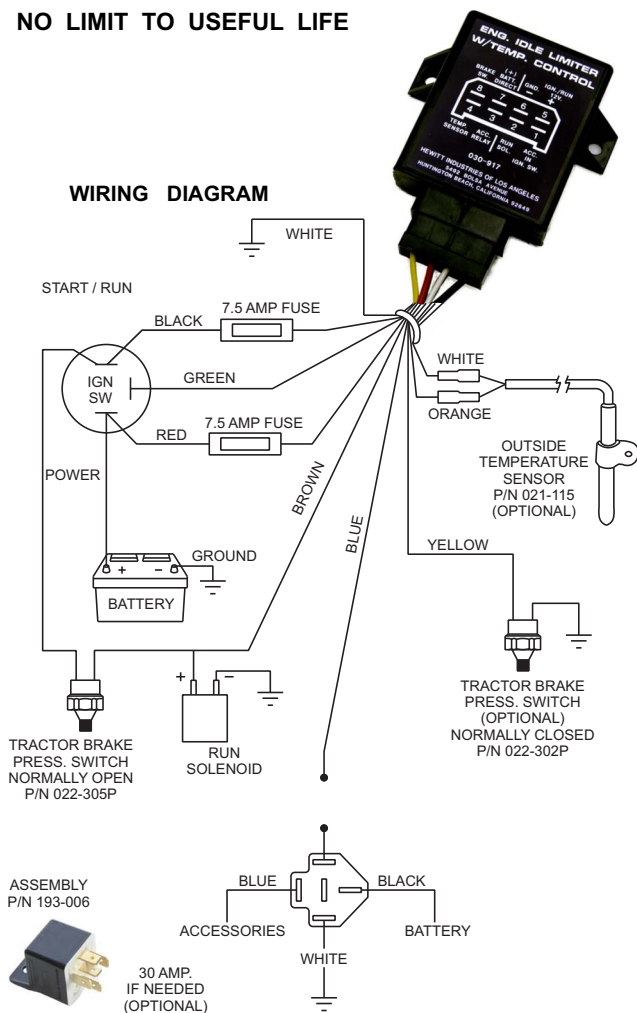
## ENGINE IDLE LIMITER w / Temp. Control

**"ENGINE DON'T IDLE FOR FREE"**

KIT NO. 193-917

### FEATURES:

- LIMITS ENGINE IDLE TIME TO STD. 5 MINUTES
- ENGINE AND ACCESSORIES SHUTDOWN
- REDUCES RPM COUNT BY MILLIONS PER YEAR
- EXTENDS ENGINE LIFE
- STOPS FUEL WASTE
- APPLICABLE TO GAS AND DIESEL ENGINES
- LOW COST EASY TO INSTALL
- WARRANTED FOR THREE YEARS
- NO LIMIT TO USEFUL LIFE



### SPECIFICATIONS:

POWER INPUT:  
VOLTAGE: 12 / 24 VDC MODELS.  
CURRENT: 250mA MAXIMUM  
PLUS LOAD CURRENT.  
7.5 AMP FUSE REQUIRED ON  
POWER INPUT.

SIGNAL OUTPUT:  
ALARM SIGNAL RATED  
7.5 AMP TOTAL NON-INDUCTIVE  
OR 4 AMP INDUCTIVE.

PROTECTION:  
TRANSIENTS,  
RF SIGNAL INTERFERENCE,  
REVERSE POLARITY,  
FUSE 7.5 AMP,  
TEMPERATURE COMPENSATED.

OPERATING TEMPERATURE:  
-40°C / +85°C

P/N: 030-917 12 VOLTS  
P/N: 030-917-1 24 VOLTS



**HEWITT INDUSTRIES**

5492 BOLSA AVE. HUNTINGTON BEACH, CA 92649

PH. (714) 891-9300

FAX. (714) 897-7632

WEBSITE: [www.hewittindustries.com](http://www.hewittindustries.com)

E-MAIL: [sales@hewittindustries.com](mailto:sales@hewittindustries.com)

## **MULTI - ALARM IV ENGINE PROTECTION SYSTEM**

### **ENGINE PROTECTION AGAINST**

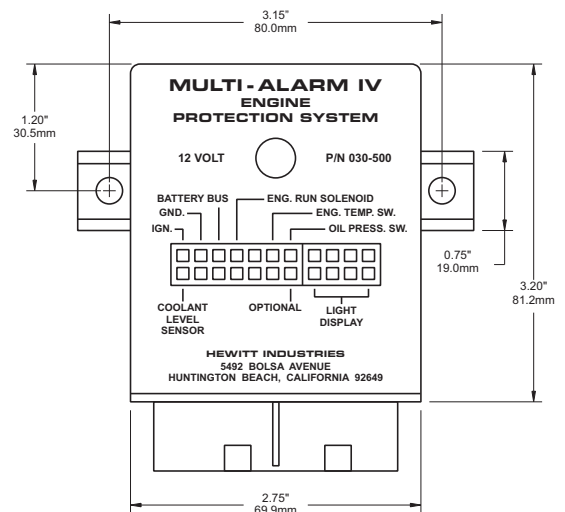
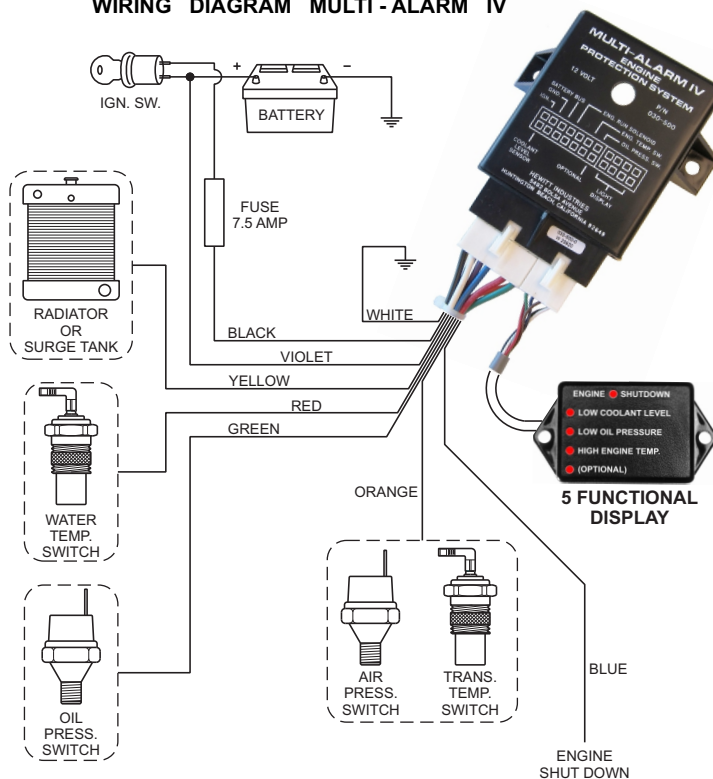
**ALARM WITH 30 SEC. DELAYED ENGINE SHUTDOWN**

**KIT NO. 191-500**

- HIGH COOLANT TEMPERATURE
- LOW OIL PRESSURE
- LOW COOLANT LEVEL
- OPTIONAL
- EXISTING SWITCHES CAN BE USED
- LOW COST
- EASY TO INSTALL
- WARRANTED FOR 3 YEARS REGARDLESS OF MILEAGE
- NO LIMIT TO USEFUL LIFE



**WIRING DIAGRAM MULTI - ALARM IV**



**SPECIFICATIONS:**

**POWER INPUT:**  
VOLTAGE: 12 / 24 VDC MODELS.  
CURRENT: 250mA MAXIMUM  
PLUS LOAD CURRENT.  
7.5 AMP FUSE REQUIRED ON  
POWER INPUT.

**SIGNAL OUTPUT:**  
ALARM SIGNAL RATED  
7.5 AMP TOTAL NON-INDUCTIVE  
OR 4 AMP INDUCTIVE.

**PROTECTION:**  
TRANSIENTS,  
RF SIGNAL INTERFERENCE,  
REVERSE POLARITY,  
FUSE 7.5 AMP,  
TEMPERATURE COMPENSATED.

**OPERATING TEMPERATURE:**  
-40°C / +85°C

P/N: 030-500 12 VOLTS  
P/N: 030-500-1 24 VOLTS



**HEWITT INDUSTRIES**

5492 BOLSA AVE. HUNTINGTON BEACH, CA 92649

PH. (714) 891-9300

FAX. (714) 897-7632

WEBSITE: [www.hewittindustries.com](http://www.hewittindustries.com)

E-MAIL: [sales@hewittindustries.com](mailto:sales@hewittindustries.com)

## BATTERY DISCHARGE PROTECTION SYSTEM

### COMPLETE BATTERY PROTECTION

— THE BATTERY KILLER —

— NO MORE JUMP STARTS —

KIT NO. 192-935

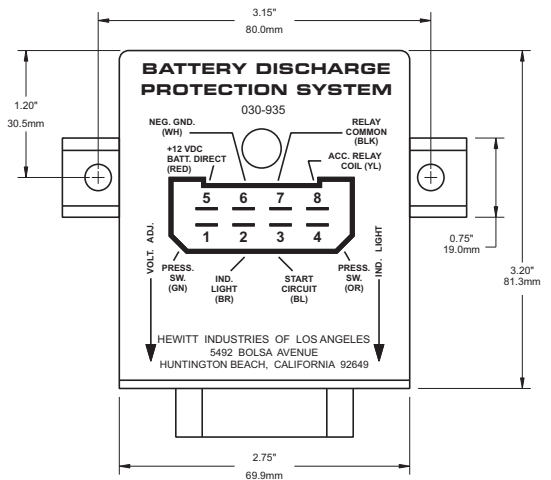
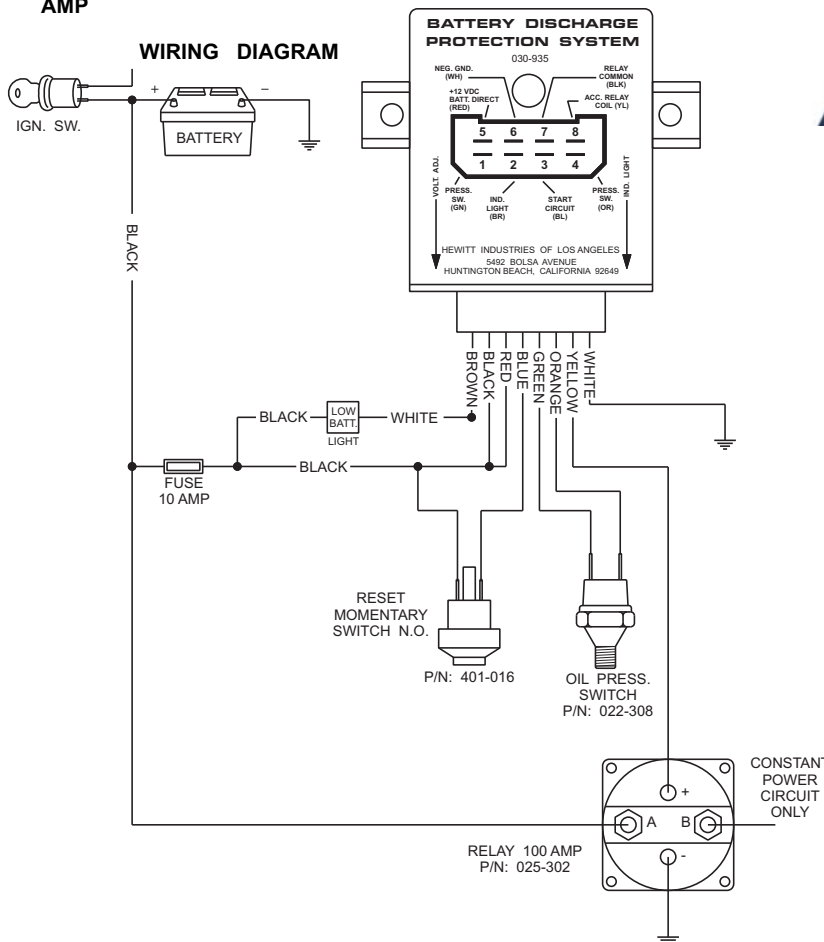
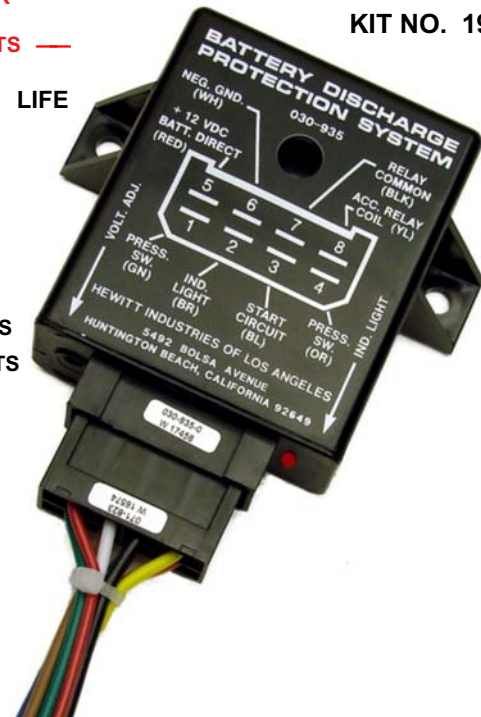
- ASSURES RESTART VOLTAGE
- OVER USE OF ACCESSORIES
- DEEP DISCHARGING
- EXTENDS BATTERY LIFE
- PARASITIC DRAIN



**P/N: 025-302**  
**RELAY**  
**100**  
**AMP**

#### APPLICATIONS

- PICKUPS AND VANS
- RV'S / MOTORHOMES
- CAR CARRIERS
- TRUCK - CAB AND SLEEPER
- MARINE
- LIFT GATES
- CAR LIGHTS
- AUTOS



#### SPECIFICATIONS:

**POWER INPUT:**  
VOLTAGE: 12 / 24 VDC MODELS.  
CURRENT: 250mA MAXIMUM PLUS LOAD CURRENT.  
10 AMP FUSE REQUIRED ON POWER INPUT.

**SIGNAL OUTPUT:**  
ALARM SIGNAL RATED  
10 AMP TOTAL NON-INDUCTIVE OR 4 AMP INDUCTIVE.

**PROTECTION:**  
TRANSIENTS,  
RF SIGNAL INTERFERENCE,  
REVERSE POLARITY,  
FUSE 10 AMP,  
TEMPERATURE COMPENSATED.

**OPERATING TEMPERATURE:**  
-40°C / +85°C

P/N: 030-935 12 VOLTS  
P/N: 030-935-1 24 VOLTS



**HEWITT INDUSTRIES**

5492 BOLSA AVE. HUNTINGTON BEACH, CA 92649

PH. (714) 891-9300

FAX. (714) 897-7632

WEBSITE: [www.hewittindustries.com](http://www.hewittindustries.com)

E-MAIL: [sales@hewittindustries.com](mailto:sales@hewittindustries.com)

## ***SPEED SIMULATOR***

**FOR ELECTRONIC  
SPEEDOMETERS • ODOMETERS • TACHOMETERS  
MICROPROCESSOR CONTROLLER**



**P/N 030-714**

### **FEATURES:**

- EASY CONNECTING
- EASY TO OPERATE
- NO INSTRUMENT REMOVAL
- TEST IN PLACE
- SAVE TIME
- NEVER NEEDS CALIBRATING
- ALL INSTRUMENT BRANDS
- VOLTAGE RANGE 9.5/28 VDC
- ACCURACY .1%
- WARRANTY - 2 YEARS

ACTUAL SIZE



With the Hewitt Speed Simulator you can quickly and accurately test, verify or reprogram speedometers, odometers, and tachometers without removing them from the instrument panel.

The simulator has an easy to read LED display and microprocessor controlled circuitry emitting a signal accuracy of 0.1% or better.

Simplicity of design facilitates Simulator application saving valuable shop time, the delay and expense of calling in an outside source.

It is rugged to meet service shop use and does not require periodic recalibration.

Faulty instruments will not damage the Simulator.

It will drive any instrument regardless of manufacture.

Standard speed signal connectors are Weather Pac, other options are available.

To use, follow the simple connect diagram and formulas supplied.

### Hz NUMBER FORMULAS SPEEDOMETER TEST

- A. When a tire rev.'s/mile are **unknown**.  
Measure tire circumference for one revolution.  
Inches in one mile = 63360  
Assume tire circumference is 133.1 inches  
Example:  $\frac{63360}{133.1} = 476$  tire rev.'s/mile
- B. When tire rev.'s/mile are **known** use the following formula:  
**NOTE:** Tire rev.'s stated in kilometers must be converted to miles: (kilometers x 0.6214 = miles)
1. TRANSMISSION MOUNTED MAGNETIC SENSOR WITH SIGNAL GEAR.  
$$\frac{\text{Tire rev./mile} \times \text{axle ratio} \times \text{sensor gear tooth count}}{60} = \text{Hz}$$
  
Example:  $\frac{470 \times 3.71 \times 16}{60} = 465 \text{ Hz}$

2. WHEEL MOUNTED DISC AND MAGNETIC SENSOR:

$$\frac{\text{Tire rev./mile} \times \text{disc slots}}{60} = \text{Hz}$$

Example:  $\frac{470 \times 120}{60} = 940 \text{ Hz}$

3. SIGNAL GENERATOR MOUNTED ON PENCIL GEAR:

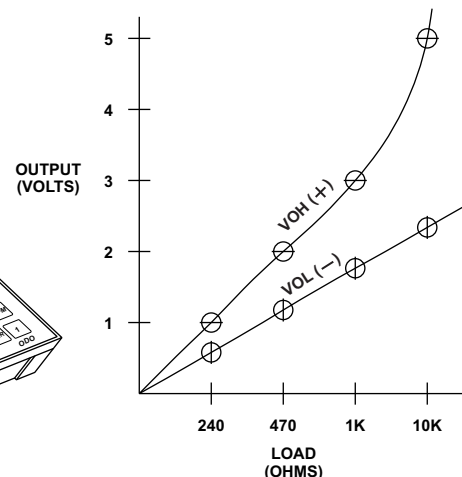
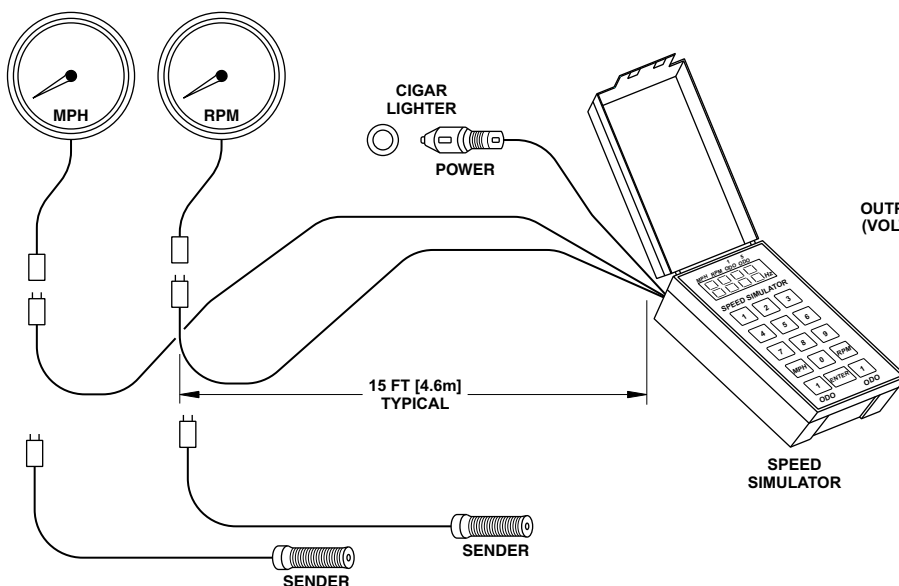
$$\frac{\text{Pencil gear rev./mile} \times \text{sig. gen. pulse per rev.}}{60} = \text{Hz}$$

Example:  $\frac{1000 \times 16}{60} = 267 \text{ Hz}$

### TACHOMETER TEST

$$\frac{\text{Number of flywheel teeth} \times \text{R.P.M.}}{60} = \text{Hz}$$

Example:  $\frac{113 \times 3000}{60} = 5,650 \text{ Hz}$





## HEWITT INDUSTRIES

5492 BOLSA AVE. HUNTINGTON BEACH, CA 92649

PH. (714) 891-9300

FAX. (714) 897-7632

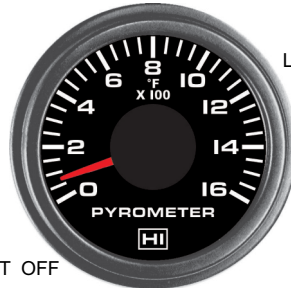
WEBSITE: [www.hewittindustries.com](http://www.hewittindustries.com)

E-MAIL: [sales@hewittindustries.com](mailto:sales@hewittindustries.com)

### 2" PYROMETERS



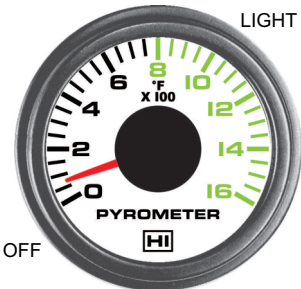
P/N 010-213



LIGHT ON

LIGHT OFF

BLACK BACKGROUND WITH  
WHITE ILLUMINATION



LIGHT ON

LIGHT OFF

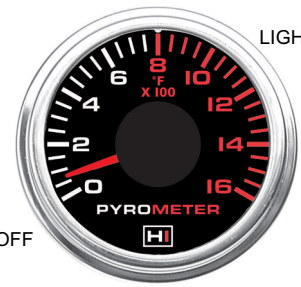
WHITE BACKGROUND WITH  
GREEN ILLUMINATION



LIGHT ON

LIGHT OFF

BLACK BACKGROUND WITH  
GREEN ILLUMINATION



LIGHT ON

LIGHT OFF

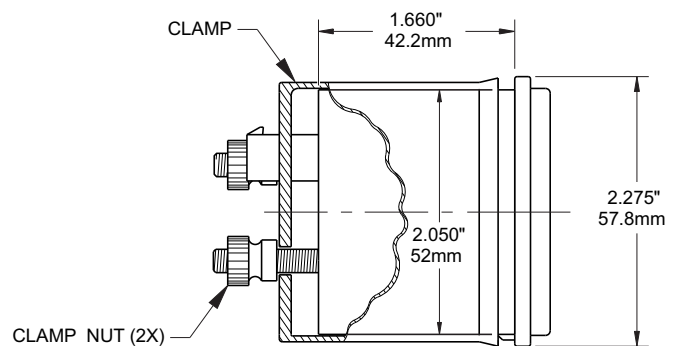
BLACK BACKGROUND WITH  
RED ILLUMINATION



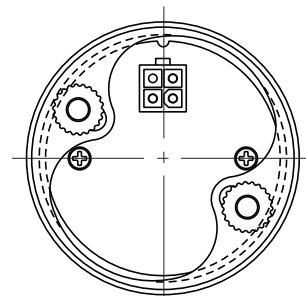
P/N 010-112



P/N 010-301



SIDE VIEW



BACK VIEW



**HEWITT INDUSTRIES**

5492 BOLSA AVE. HUNTINGTON BEACH, CA 92649

PH. (714) 891-9300

FAX. (714) 897-7632

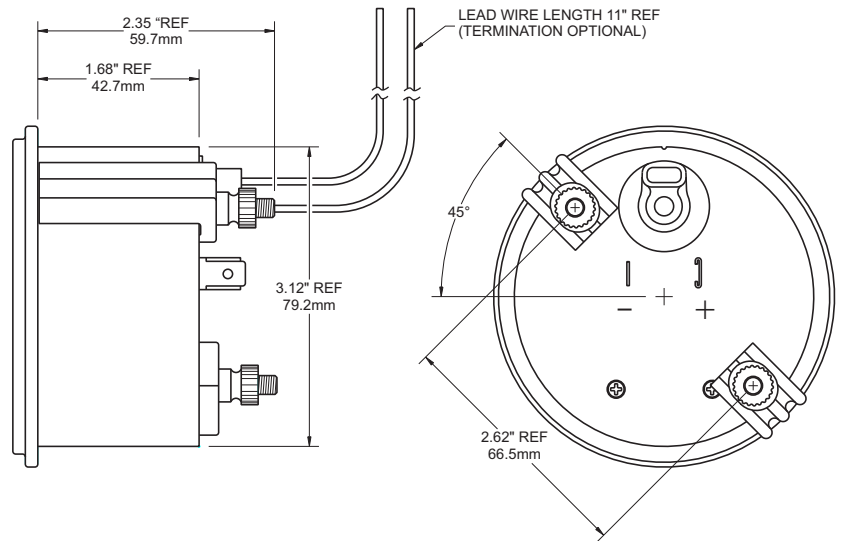
WEBSITE: [www.hewittindustries.com](http://www.hewittindustries.com)

E-MAIL: [sales@hewittindustries.com](mailto:sales@hewittindustries.com)

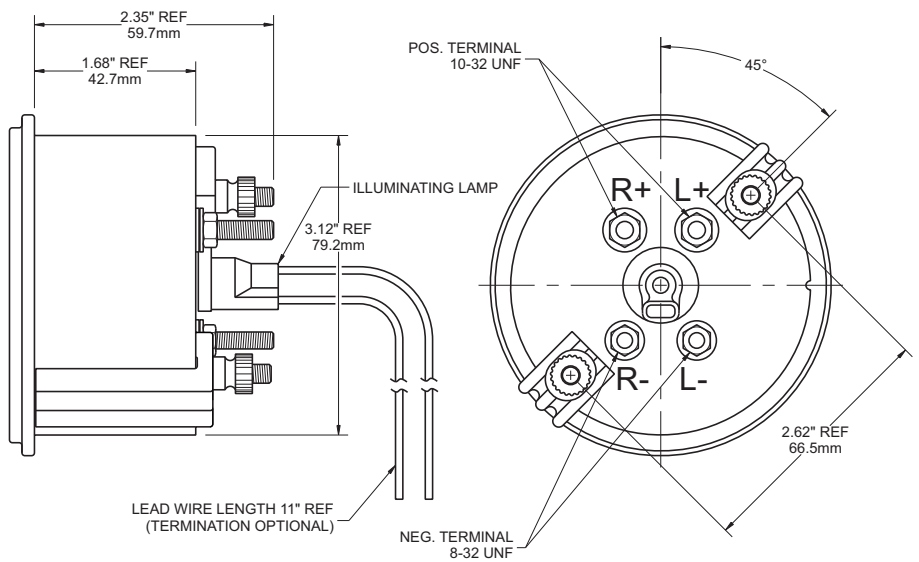
## 3" PYROMETERS



P/N 010-427



P/N 010-503







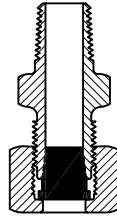
# LIFETIME WARRANTY

[illegible]

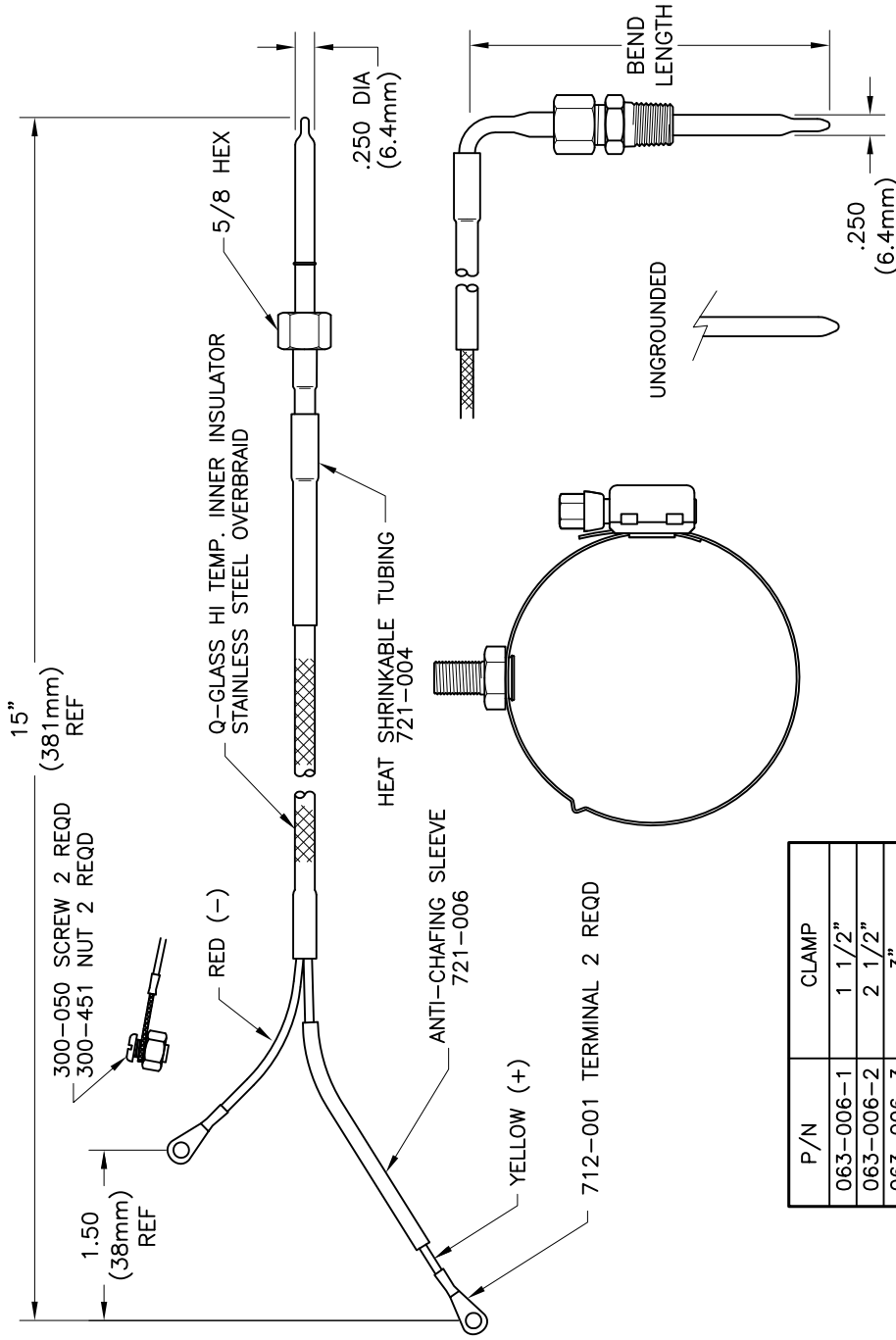
## STANDARD FITTINGS

| P/N       | THREAD     | S/S |
|-----------|------------|-----|
| 063-001   | 1/8 NPTF   |     |
| 063-002   | 1/4 NPTF   |     |
| 063-003   | 3/8 NPTF   |     |
| 063-004   | 1/2 NPTF   |     |
| 063-005   | 1/2-20 UNF |     |
| 063-005-1 | 14MM X 1.5 |     |
|           |            |     |
|           |            |     |

## FERRULE TYPE FITTINGS



| P/N     | THREAD S/S |
|---------|------------|
| 065-000 | 1/8 NPTF   |
| 065-001 | 1/4 NPTF   |
| 065-002 | 3/8 NPTF   |
| 065-003 | 1/2 NPTF   |
| 065-004 | 1/2-20 UNF |
| 065-005 | 14MM X 1.5 |
| 065-006 | WELD NUT   |



| P/N       | CLAMP  |
|-----------|--------|
| 063-006-1 | 1 1/2" |
| 063-006-2 | 2 1/2" |
| 063-006-3 | 3"     |
| 063-006-4 | 3 1/2" |

| P/N     | TYPE | GAGE | SOLID | STRANDED |
|---------|------|------|-------|----------|
| 713-020 | K    | 18   | X     |          |
| 713-021 | J    | 18   | X     |          |
| 713-029 | K    | 18   |       | X        |

1/4" THERMOCOUPLE TUBE

| REVISIONS |                                    |         |          | TOLERANCES |                                       | HEWITT INDUSTRIES OF LOS ANGELES |  |
|-----------|------------------------------------|---------|----------|------------|---------------------------------------|----------------------------------|--|
| REV.      | DESCRIPTION                        | EO#     | DATE     | BY         | UNLESS OTHERWISE SPECIFIED:           |                                  |  |
| 1         | INFO. FOR CUSTOMER USE             | -       | 10/08/08 | EGM        | DIMENSIONS ARE IN INCHES.             |                                  |  |
| 2         | CORRECTED & SORTED THE PART NUMBER | -       | 01/26/09 | EGM        | METRIC EQUIVALENTS ARE IN [BRACKETS]: |                                  |  |
| 3         | CORRECTED & SORTED THE PART NUMBER | ECO 456 | 02/04/09 | EGM        | X = .030 [0.76]                       |                                  |  |
|           |                                    |         |          |            | XX = .010 [0.25]                      |                                  |  |
|           |                                    |         |          |            | XXX = .005 [0.13]                     |                                  |  |
|           |                                    |         |          |            | FRACTIONS = 1/32                      |                                  |  |
|           |                                    |         |          |            | ANGLES = ±1°                          |                                  |  |
|           |                                    |         |          |            | SCALE: NONE                           |                                  |  |
|           |                                    |         |          |            |                                       | DATE: 10/08/08                   |  |
|           |                                    |         |          |            |                                       | DRAWN BY: E. MARIANO             |  |
|           |                                    |         |          |            |                                       | PART NO. 015-XXX-X               |  |
|           |                                    |         |          |            |                                       | APPR. BY: J. HEWITT              |  |
|           |                                    |         |          |            |                                       | SHEET 1 OF 1                     |  |



**HEWITT INDUSTRIES**

5492 BOLSA AVE. HUNTINGTON BEACH, CA 92649

PH. (714) 891-9300

FAX. (714) 897-7632

WEBSITE: [www.hewittindustries.com](http://www.hewittindustries.com)

E-MAIL: [sales@hewittindustries.com](mailto:sales@hewittindustries.com)

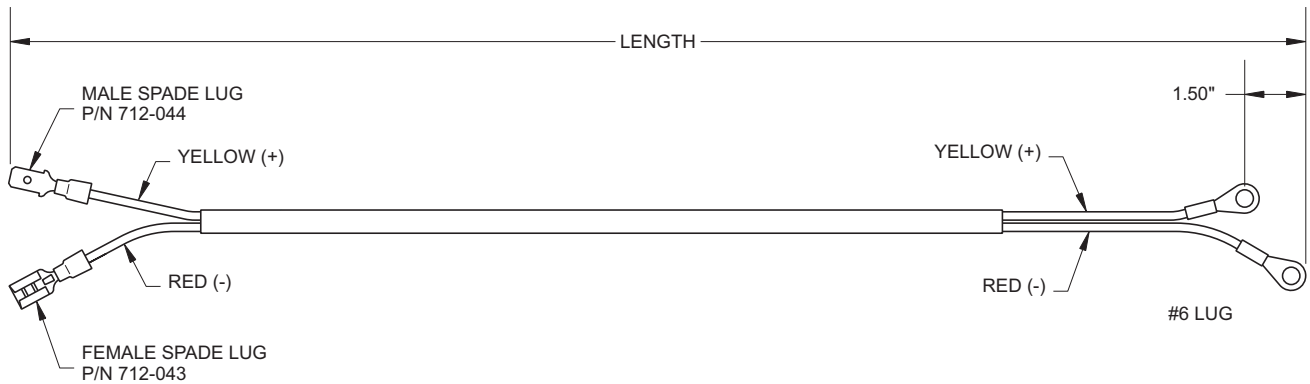
## THERMOCOUPLE EXTENSION WIRE

### "K" TYPE

#### LENGTH

#### TERMINATION

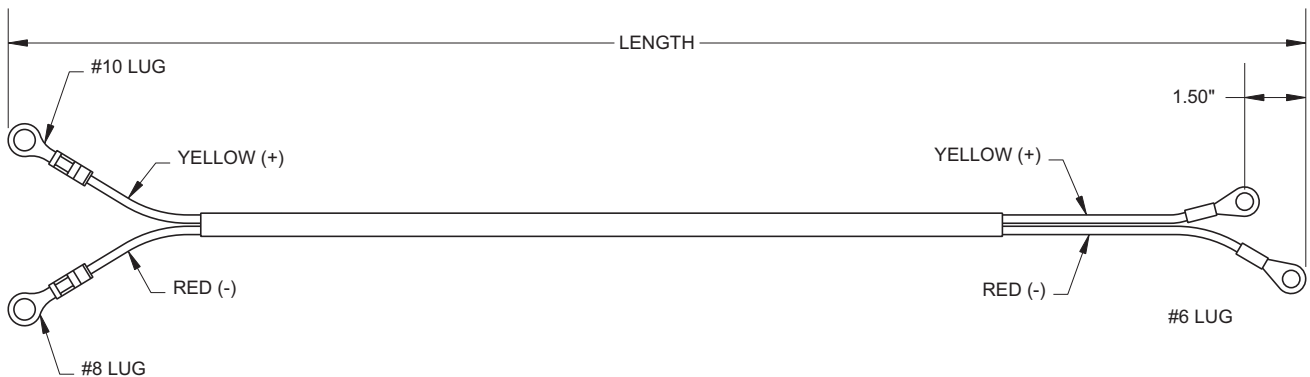
| 2" INSTRUMENT | 7' - 12' - 14' | #6 LUG | WEATHERPACK | METRI-PACK 280 SERIES | OTHER |
|---------------|----------------|--------|-------------|-----------------------|-------|
| ORDERING      |                |        |             |                       |       |



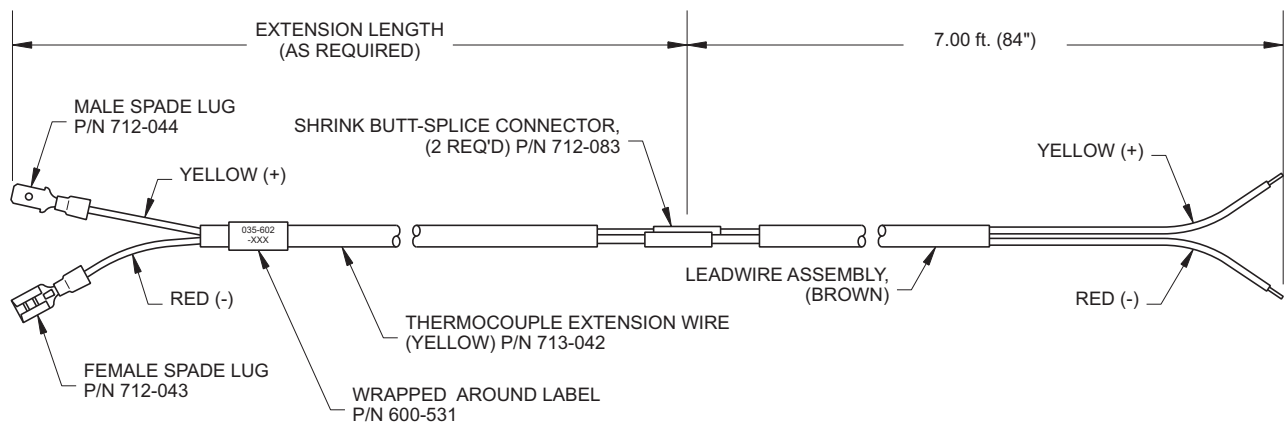
#### LENGTH

#### TERMINATION

| 3" INSTRUMENT | 7' - 12' - 14' | #6 LUG | WEATHERPACK | METRI-PACK 280 SERIES | OTHER |
|---------------|----------------|--------|-------------|-----------------------|-------|
| ORDERING      |                |        |             |                       |       |



**" EXTENSION OVER 14 ft REQUIRE COPPER WIRE "**





# HEWITT INDUSTRIES

5492 BOLSA AVE. HUNTINGTON BEACH, CA 92649

PH. (714) 891-9300

FAX. (714) 897-7632

WEBSITE: [www.hewittindustries.com](http://www.hewittindustries.com)

E-MAIL: [sales@hewittindustries.com](mailto:sales@hewittindustries.com)

## ENGINE OIL LEVEL

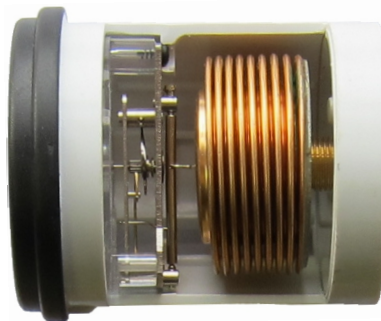
**Intrinsically Safe**

Patent No.: US 7,658,104 B2

Date of Patent: \*Feb 9, 2010



P/N 111-000



P/N 111-001 ALARM

TRUCK • BUSES • MARINE • INDUSTRIAL • AIRCRAFT

- ANY ENGINE AND TANK SIZE
- ACCURACY – FUEL SCALE  $\pm 1\%$
- L.E.D. ILLUMINATION
- EASY TO INSTALL
- WARRANTED FOR 3 YEARS
- NO LIMIT USEFUL LIFE

This is a direct reading instrument, driven by the column pressure generated in the sender by the height of the liquid. The pressure is transferred to the gauge through a 4mm tube. This results in a full scale accuracy of  $\pm 1\%$ . The unit can be installed in instrument or remotely mounted.

P/N 118-000 Purge Pump is necessary the vacuum all tube all the system.



### ENGINE OIL DRAIN CONNECTION

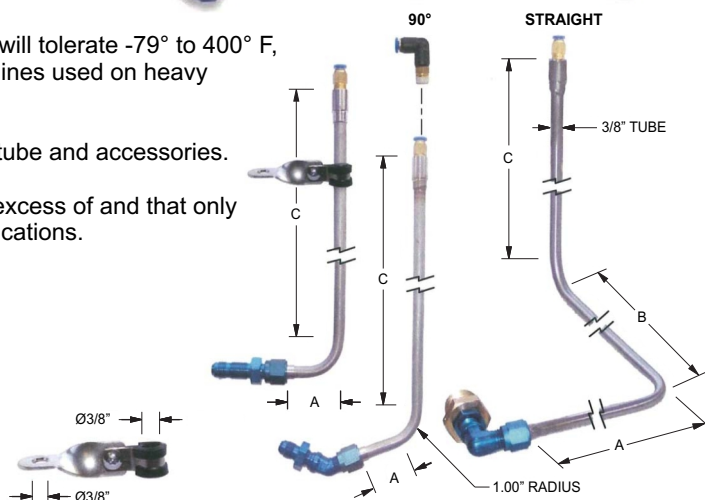
| OIL DRAIN SELECTION |     |        | AN832-06D | AN833-06D | AN837-06D |
|---------------------|-----|--------|-----------|-----------|-----------|
| SAE                 | NPT | METRIC | STRAIGHT  | 90°       | 45°       |
|                     |     |        |           |           |           |

ADAPTER FITTING

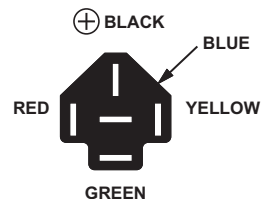
The 4mm tube, which will tolerate  $-79^{\circ}$  to  $400^{\circ}$  F, is similar to the brake lines used on heavy trucks and busses.

Instrument and 9 feet tube and accessories.

It can be extended in excess of and that only 100 ft. for marine applications.



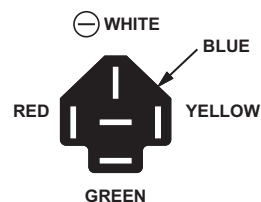
**WITH ALARM**



⊕ POSITIVE

NO ALARM  
BLUE IS OPEN  
⊕ GREEN IS POSITIVE

ALARM  
⊕ BLUE IS POSITIVE  
GREEN IS OPEN



⊖ NEGATIVE

NO ALARM  
BLUE IS OPEN  
⊖ GREEN IS NEGATIVE

ALARM  
⊖ BLUE IS NEGATIVE  
GREEN IS OPEN



RELAY  
P/N 405-006-0 12V  
P/N 405-006-1 24V



# HEWITT INDUSTRIES

5492 BOLSA AVE. HUNTINGTON BEACH, CA 92649

PH. (714) 891-9300

FAX. (714) 897-7632

WEBSITE: [www.hewittindustries.com](http://www.hewittindustries.com)

E-MAIL: [sales@hewittindustries.com](mailto:sales@hewittindustries.com)

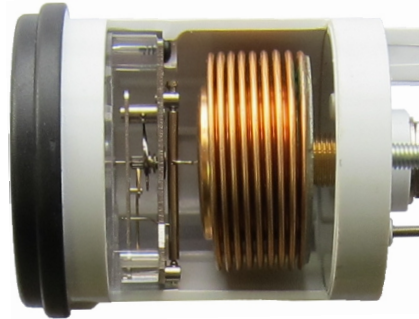
## FUEL LEVEL

### Intrinsically Safe

### Non - Electric



P/N 112-000



P/N 112-001 ALARM

TRUCK • BUSES • MARINE • INDUSTRIAL • AIRCRAFT

- ANY ENGINE AND TANK SIZE
- ACCURACY – FUEL SCALE  $\pm 1\%$
- L.E.D. ILLUMINATION
- EASY TO INSTALL
- WARRANTED FOR 3 YEARS
- NO LIMIT USEFUL LIFE

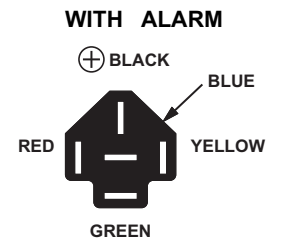
This is a direct reading instrument, driven by the column pressure generated in the sender by the height of the liquid. The pressure is transferred to the gauge through a 4mm tube. This results in a full scale accuracy of  $\pm 1\%$ . The unit can be installed in instrument or remotely mounted.

The 4mm tube, which will tolerate  $-79^{\circ}$  to  $400^{\circ}$  F, is similar to the brake lines used on heavy duty trucks and busses.

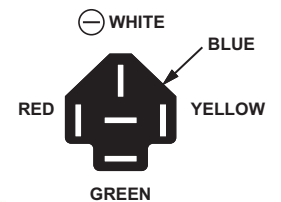
Instrument and 9 feet and accessories.

It can be extended in excess of and that only 100 ft. for marine applications.

P/N 118-000 Purge Pump is necessary the vacuum all tube all the system.



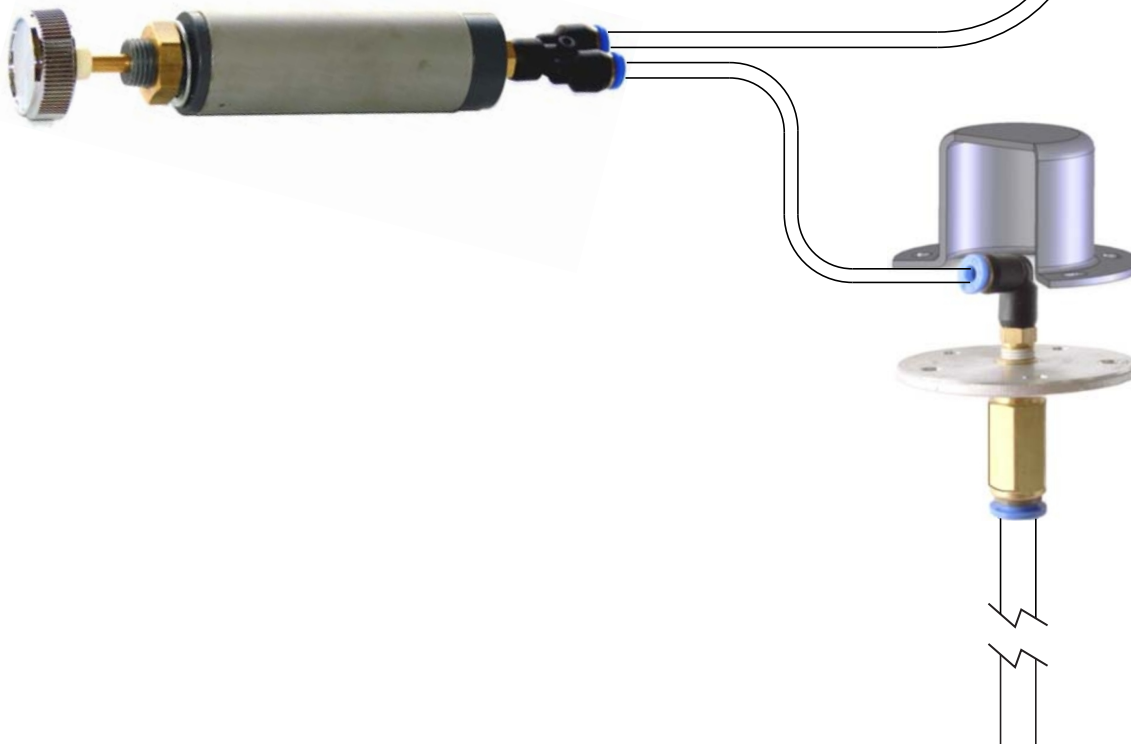
- ⊕ POSITIVE
- NO ALARM  
BLUE IS OPEN  
GREEN IS POSITIVE
- ⊕ ALARM  
BLUE IS POSITIVE  
GREEN IS OPEN



- ⊖ NEGATIVE
- NO ALARM  
BLUE IS OPEN  
GREEN IS NEGATIVE
- ⊖ ALARM  
BLUE IS NEGATIVE  
GREEN IS OPEN



RELAY  
P/N 405-006-0 12V  
P/N 405-006-1 24V







## HEWITT INDUSTRIES

5492 BOLSA AVE. HUNTINGTON BEACH, CA 92649

PH. (714) 891-9300

FAX. (714) 897-7632

WEBSITE: [www.hewittindustries.com](http://www.hewittindustries.com)

E-MAIL: [sales@hewittindustries.com](mailto:sales@hewittindustries.com)

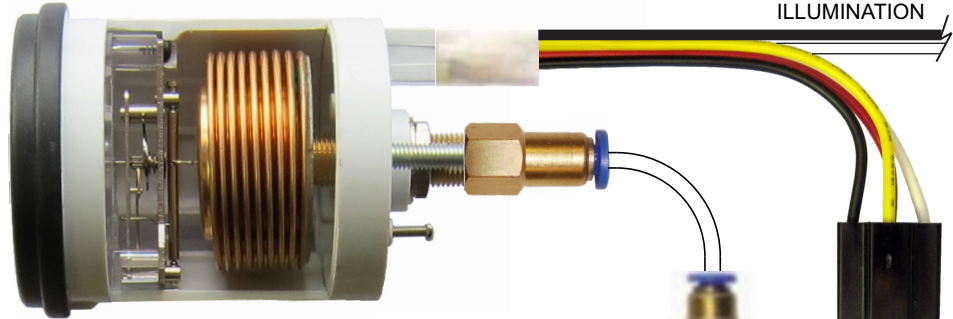
# HYDRAULIC LEVEL

**Intrinsically Safe**

**Non - Electric**



P/N 113-000



P/N 113-001 ALARM

TRUCK • BUSES • MARINE • INDUSTRIAL • AIRCRAFT

- ANY ENGINE AND TANK SIZE
- ACCURACY – FUEL SCALE  $\pm 1\%$
- L.E.D. ILLUMINATION
- EASY TO INSTALL
- WARRANTED FOR 3 YEARS
- NO LIMIT USEFUL LIFE

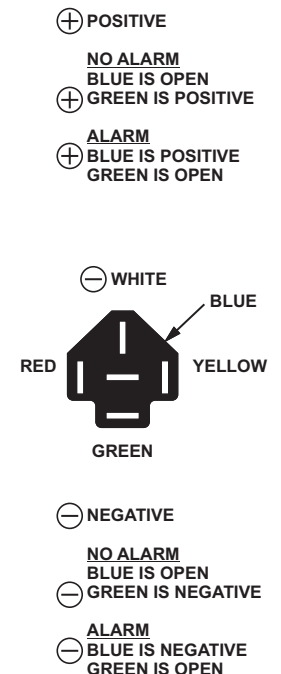
This is a direct reading instrument, driven by the column pressure generated in the sender by the height of the liquid. The pressure is transferred to the gauge through a 4mm tube. This results in a full scale accuracy of  $\pm 1\%$ . The unit can be installed in instrument or remotely mounted.

The 4mm tube, which will tolerate  $-79^{\circ}$  to  $400^{\circ}$  F, is similar to the brake lines used on heavy duty trucks and busses.

Instrument and 9 feet and accessories.

It can be extended in excess of and that only 100 ft. for marine applications.

P/N 118-000 Purge Pump is necessary the vacuum all tube all the system.



RELAY  
P/N 405-006-0 12V  
P/N 405-006-1 24V



## HEWITT INDUSTRIES

5492 BOLSA AVE. HUNTINGTON BEACH, CA 92649

PH. (714) 891-9300

FAX. (714) 897-7632

WEBSITE: [www.hewittindustries.com](http://www.hewittindustries.com)

E-MAIL: [sales@hewittindustries.com](mailto:sales@hewittindustries.com)

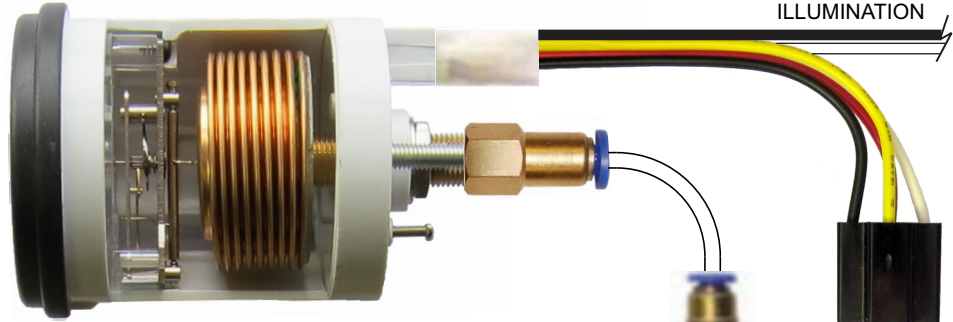
## GEAR OIL

**Intrinsically Safe**

**Non - Electric**



P/N 114-000



P/N 114-001 ALARM

**TRUCK • BUSES • MARINE • INDUSTRIAL • AIRCRAFT**

- ANY ENGINE AND TANK SIZE
- ACCURACY – FUEL SCALE  $\pm 1\%$
- L.E.D. ILLUMINATION
- EASY TO INSTALL
- WARRANTED FOR 3 YEARS
- NO LIMIT USEFUL LIFE

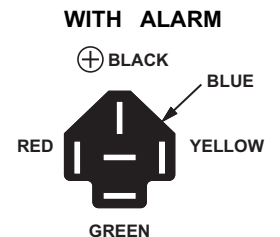
This is a direct reading instrument, driven by the column pressure generated in the sender by the height of the liquid. The pressure is transferred to the gauge through a 4mm tube. This results in a full scale accuracy of  $\pm 1\%$ . The unit can be installed in instrument or remotely mounted.

The 4mm tube, which will tolerate  $-79^{\circ}$  to  $400^{\circ}$  F, is similar to the brake lines used on heavy duty trucks and busses.

Instrument and 9 feet and accessories.

It can be extended in excess of and that only 100 ft. for marine applications.

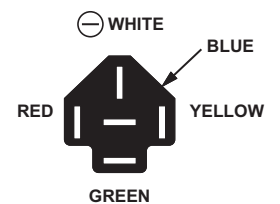
P/N 118-000 Purge Pump is necessary the vacuum all tube all the system.



⊕ POSITIVE

NO ALARM  
BLUE IS OPEN  
⊕ GREEN IS POSITIVE

ALARM  
⊕ BLUE IS POSITIVE  
GREEN IS OPEN



⊖ NEGATIVE

NO ALARM  
BLUE IS OPEN  
⊖ GREEN IS NEGATIVE

ALARM  
⊖ BLUE IS NEGATIVE  
GREEN IS OPEN



**RELAY**  
P/N 405-006-0 12V  
P/N 405-006-1 24V



# HEWITT INDUSTRIES

5492 BOLSA AVE. HUNTINGTON BEACH, CA 92649

PH. (714) 891-9300

FAX. (714) 897-7632

WEBSITE: [www.hewittindustries.com](http://www.hewittindustries.com)

E-MAIL: [sales@hewittindustries.com](mailto:sales@hewittindustries.com)

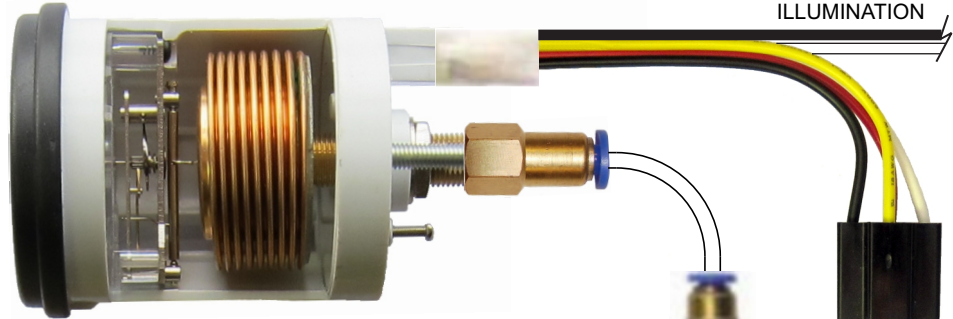
## POTABLE WATER

**Intrinsically Safe**

**Non - Electric**



P/N 115-000



P/N 115-001 ALARM

TRUCK • BUSES • MARINE • INDUSTRIAL • AIRCRAFT

- ANY ENGINE AND TANK SIZE
- ACCURACY – FUEL SCALE  $\pm 1\%$
- L.E.D. ILLUMINATION
- EASY TO INSTALL
- WARRANTED FOR 3 YEARS
- NO LIMIT USEFUL LIFE

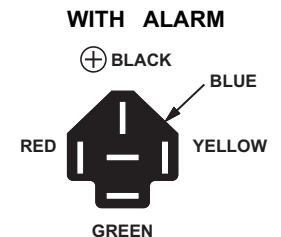
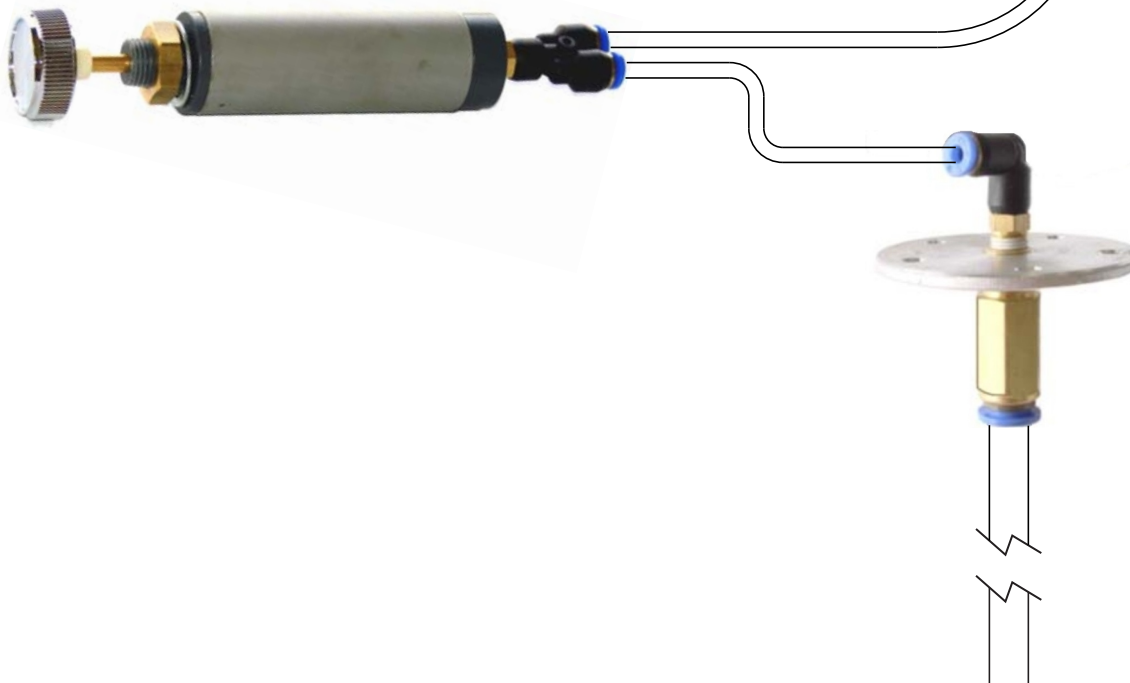
This is a direct reading instrument, driven by the column pressure generated in the sender by the height of the liquid. The pressure is transferred to the gauge through a 4mm tube. This results in a full scale accuracy of  $\pm 1\%$ . The unit can be installed in instrument or remotely mounted.

The 4mm tube, which will tolerate  $-79^{\circ}$  to  $400^{\circ}$  F, is similar to the brake lines used on heavy trucks and busses.

Instrument and 9 feet and accessories.

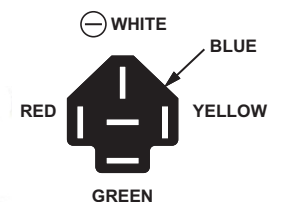
It can be extended in excess of and that only 100 ft. for marine applications.

P/N 118-000 Purge Pump is necessary the vacuum all tube all the system.



- ⊕ POSITIVE
- NO ALARM
- BLUE IS OPEN
- ⊕ GREEN IS POSITIVE

- ⊕ ALARM
- BLUE IS POSITIVE
- GREEN IS OPEN



- ⊖ NEGATIVE
- NO ALARM
- BLUE IS OPEN
- ⊖ GREEN IS NEGATIVE

- ⊖ ALARM
- BLUE IS NEGATIVE
- GREEN IS OPEN



RELAY  
P/N 405-006-0 12V  
P/N 405-006-1 24V



## HEWITT INDUSTRIES

5492 BOLSA AVE. HUNTINGTON BEACH, CA 92649

PH. (714) 891-9300

FAX. (714) 897-7632

WEBSITE: [www.hewittindustries.com](http://www.hewittindustries.com)

E-MAIL: [sales@hewittindustries.com](mailto:sales@hewittindustries.com)

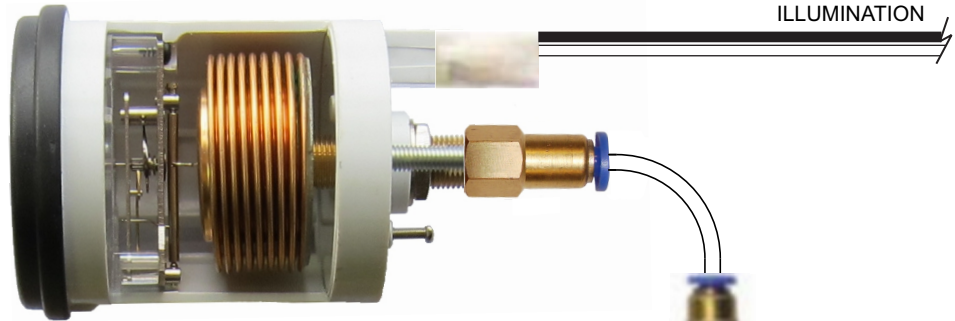
## WASTE WATER

**Intrinsically Safe**

**Non - Electric**



P/N 116-000



P/N 116-001 ALARM

**TRUCK • BUSES • MARINE • INDUSTRIAL • AIRCRAFT**

- ANY ENGINE AND TANK SIZE
- ACCURACY – FUEL SCALE  $\pm 1\%$
- L.E.D. ILLUMINATION
- EASY TO INSTALL
- WARRANTED FOR 3 YEARS
- NO LIMIT USEFUL LIFE

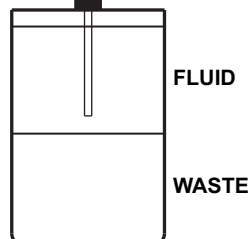
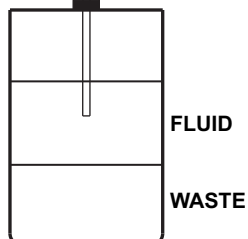
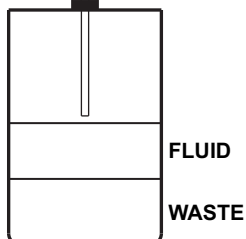
This is a direct reading instrument, driven by the column pressure generated in the sender by the height of the liquid. The pressure is transferred to the gauge through a 4mm tube. This results in a full scale accuracy of  $\pm 1\%$ . The unit can be installed in instrument or remotely mounted.

The 4mm tube, which will tolerate  $-79^{\circ}$  to  $400^{\circ}$  F, is similar to the brake lines used on heavy duty trucks and busses.

Instrument and 9 feet and accessories.

It can be extended in excess of and that only 100 ft. for marine applications.

P/N 118-000 Purge Pump is necessary the vacuum all tube all the system.



TANK





## HEWITT INDUSTRIES

5492 BOLSA AVE. HUNTINGTON BEACH, CA 92649

PH. (714) 891-9300

FAX. (714) 897-7632

WEBSITE: [www.hewittindustries.com](http://www.hewittindustries.com)

E-MAIL: [sales@hewittindustries.com](mailto:sales@hewittindustries.com)

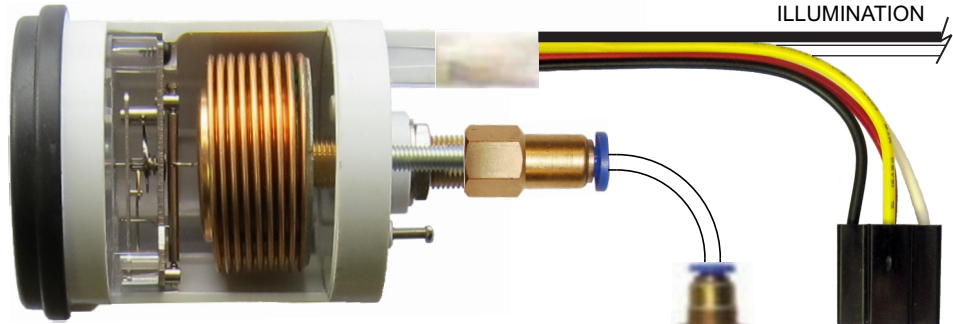
### BACK PRESSURE

**Intrinsically Safe**

**Non - Electric**



P/N 117-000



P/N 117-001 ALARM

TRUCK • BUSES • MARINE • INDUSTRIAL • AIRCRAFT

- ANY ENGINE AND TANK SIZE
- ACCURACY – FUEL SCALE  $\pm 1\%$
- L.E.D. ILLUMINATION
- EASY TO INSTALL
- WARRANTED FOR 3 YEARS
- NO LIMIT USEFUL LIFE

This is a direct reading instrument, driven by the column pressure generated in the sender by the height of the liquid. The pressure is transferred to the gauge through a 4mm tube. This results in a full scale accuracy of  $\pm 1\%$ . The unit can be installed in instrument or remotely mounted.

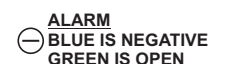
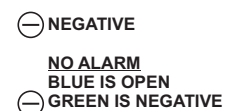
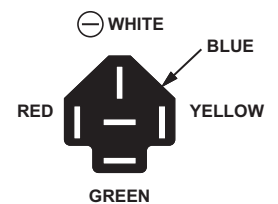
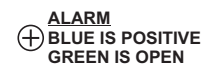
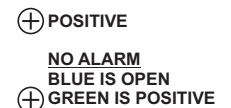
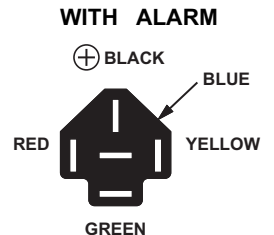
The 4mm tube, which will tolerate  $-79^{\circ}$  to  $400^{\circ}$  F, is similar to the brake lines used on heavy duty trucks and busses.

Instrument and 9 feet and accessories.

It can be extended in excess of and that only 100 ft. for marine applications.

All required fittings are supplied.

Available with or without alarm outputs.



RELAY  
P/N 405-006-0 12V  
P/N 405-006-1 24V

P/N 721-301

**Intrinsically Safe without alarm**

